

INSTRUCTION MANUAL

UNIFLOW
CYLINDER SEPARATOR
NO. 3 - CHAIN DRIVE

STYLES - CZG2, CZH2, & CZJ2

MANUAL NUMBER - 444

CARTER DAY

Carter Day International, Inc.
500 73rd Avenue N.E., Minneapolis, Minnesota 55432
(612)571-1000 • FAX: (612)571-3012

READ AND FOLLOW THE GUIDELINES ESTABLISHED WITH THIS MANUAL TO ENSURE HOURS OF TROUBLE-FREE OPERATION.

   **WARNING**   

INTERNAL MOVING PARTS CAN BE DANGEROUS.

BEFORE ATTEMPTING SERVICE OR INTERNAL INSPECTION,
DISCONNECT AND LOCKOUT ELECTRIC POWER.

DO NOT OPERATE THIS EQUIPMENT WITHOUT REQUIRED
SAFETY GUARDS OR COVERS IN PLACE.

KEEP HANDS CLEAR OF INLETS AND OUTLETS.

CARTER DAY

IMPORTANT

Shown below is an example of a nameplate from a Carter Day machine. Please locate the nameplate on your machine and fill in the Order No., Serial No., and Style No. from it onto the nameplate on this page, for future reference. Having this information at hand when you call us for parts or service will be helpful.

ORDER NO.	<input type="text"/>
SERIAL NO.	<input type="text"/>
STYLE NO.	<input type="text"/>
MANUFACTURED IN U.S.A. BY Carter-Day Company 500 73rd Ave., N.E., Minneapolis, MN 55432	

NO. 3 UNIFLOW CYLINDER SEPARATOR

INSTALLATION AND OPERATION

The No. 3 Uniflow Separator was designed to separate, by length, free flowing granular materials after roughage and dust has been removed. This machine is light and runs without vibration. A motor is mounted within the machine so that it can be installed as a unit on any solid structure. It is also possible to mount these machines one above another to make a multiple unit as desired.

Low feed rates and surging feeds to Uniflow cylinders causes the product to slosh back and forth in the cylinder, resulting in a mixed separation. For best results, stay within the stated low and high capacity recommendations and avoid surging of product into any machine. A steady even flow at the inlet will provide the uniform results you are looking for.

A cylinder speed between 38 RPM and 56 RPM can be obtained as desired by moving the motor. This adjustment can be made by turning the knob shown at "A" in the photograph. In most applications, a speed between 50 and 56 RPM would be most suitable. It will be necessary to check the cylinder speed periodically during operation to be sure that the most desirable speed is maintained. If the speed is too fast, the cylinder pockets will have a tendency to lift the longer material and if the speed is too slow, the cylinder pockets will not lift all of the shorter material and the capacity will be decreased.

The knob shown at "B" on the photograph is used to adjust the conveyor trough within the cylinder shell to make the proper separation. It is important to wait approximately five minutes after an adjustment is made before any samples are taken for checking the separation. If long material is being lifted, the separating edge of the conveyor trough is set too low. If short material which is lifted does not fall into the conveyor trough, the separating edge is set too high.

An adjustable retarder has been provided, which is held in position with a knob shown at "C" on the photograph. This retarder should be set to hold a uniform bank of material within the cylinder in order that the cylinder pockets can have a better opportunity to pick out the shorter material. The retarder blade can be mounted in either of two positions on the control bar. If less retarding and complete cleanout is desired, the retarder blade should be mounted nearest to the control knob (See drawing CD-B300).

When this machine is to be cleaned out, the conveyor trough should be turned over to completely empty it. The conveyor trough can be more quickly cleaned out without disturbing the setting by loosening the thumbscrew shown at "D" on the photograph, and turning the crank shown at "E". After the cleaning has been completed, the crank should be returned to its original position and the thumbscrew retightened.

When it becomes necessary to change the cylinder shell, the following suggestions may be helpful:

A. To remove the standard one piece shell:

1. Remove the center side plates (both sides).
2. Place a board across the two lower side plates under the cylinder.
3. Loosen the set screws in the feed spout bearing collar.
4. Remove the crank and pointer at the discharge end.
5. Remove the conveyor trough support with liftings discharge spout.
6. Place a board across the end of the trough inside the tail end of the cylinder.
7. Pull the cylinder assembly out through the discharge end.

The standard cylinder shell is made the same at both ends and can be installed by reversing the above steps.

B. To remove a two piece shell:

1. Remove the shell the same as a standard shell, or...
2. Remove the bolts holding the two half shells together and remove the halves through the side panels.
3. To install split shells, the inside lap joint should be placed opposite the rotation of the cylinder.

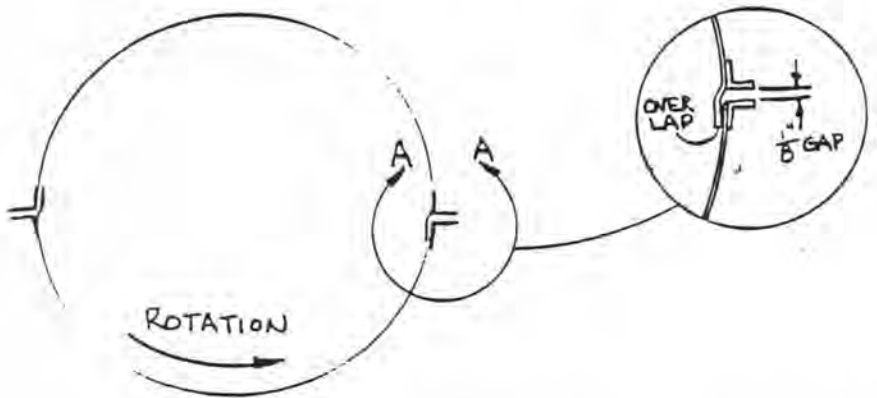
All bearings used on this machine are ball bearings, lubricated and sealed. They should not require lubrication. The drive chain should have a small amount of oil once every 500 hours of operation.

In order to remove the ball bearings from the flanges, it will be necessary to remove both from the shaft. Then the bearing must be given a quarter turn in the flange and taken out where the flange has been cut away to clear the spherical surface of the outer bearing race.

SPLIT SHELL INSTALLATION

Caution: Make certain all power to the machine is locked out before attempting to do any maintenance or work.

Remove side panels from the machine. Refer to illustration for proper shell rotation.



When viewed from discharge end.

The two half shell pieces have an extending lip on one side which must extend inside the opposing half section when put together. The half sections should be installed so that, while in operation, product is falling off of the lip and not digging into the lip as the cylinder rotates.

To install a split cylinder, first adjust retarder blade to clean out position, then put one half shell into the machine, setting it against the gear casting at the feed end. Bolt the half shell loosely to the gear casting and the discharge ring using (6) 10-24 x 1/2" long machine screws.

To aid in this procedure, the use of two 1" x 4" x 36" boards is helpful. Place boards about 12" from each end of the machine extending completely through the machine from side to side. These boards will hold the half shell up against the gear casting and discharge ring while you install the screws. Remove the boards once you have the first half installed.

Rotate the installed half shell to the top of the machine. Set the second half shell in the machine. (Note the location of the extended lip.) The two extensions should be on opposite sides of the shell.

As a rule of thumb - The extended lip bottom half will always be on your left hand side pointing up when viewing the machine from the discharge end.

Using the quick release clamps on each side of the half shells, lift one side up and hook up the latches to the opposing slots on the other half shell. Do not tighten at this time. Go to the opposite side and do the same. Now the bottom half shell will be hanging loose from the top half shell by means of the toggle clamps.

The use of vise grips to pull the two halves together can speed up the procedure by making it easier to tighten up the toggle clamps.

Tighten the toggle clamps starting at the feed end. Go around the shell tightening the clamps uniformly so as not to pull the cylinders out of alignment. As the shell halves come together, make certain that the extending lips are inside the opposing half shell.

Before completely tightening up the shell, adjust the discharge ring so it is true with the shell. Now tighten up the shell onto the gear and discharge ring. Note that when fully tightened, there will be a 1/8" - 3/16" gap between the side angles. Pulling the shells up tighter than this is unnecessary and could cause shell damage.

Now tighten the three machine screws at each end of the first half.

Rotate the shell a few times to make sure the discharge ring is still running true.

As a final check, shine a flashlight through the discharge opening and look at the seams on each side of the shell to make sure they are overlapped properly and straight.

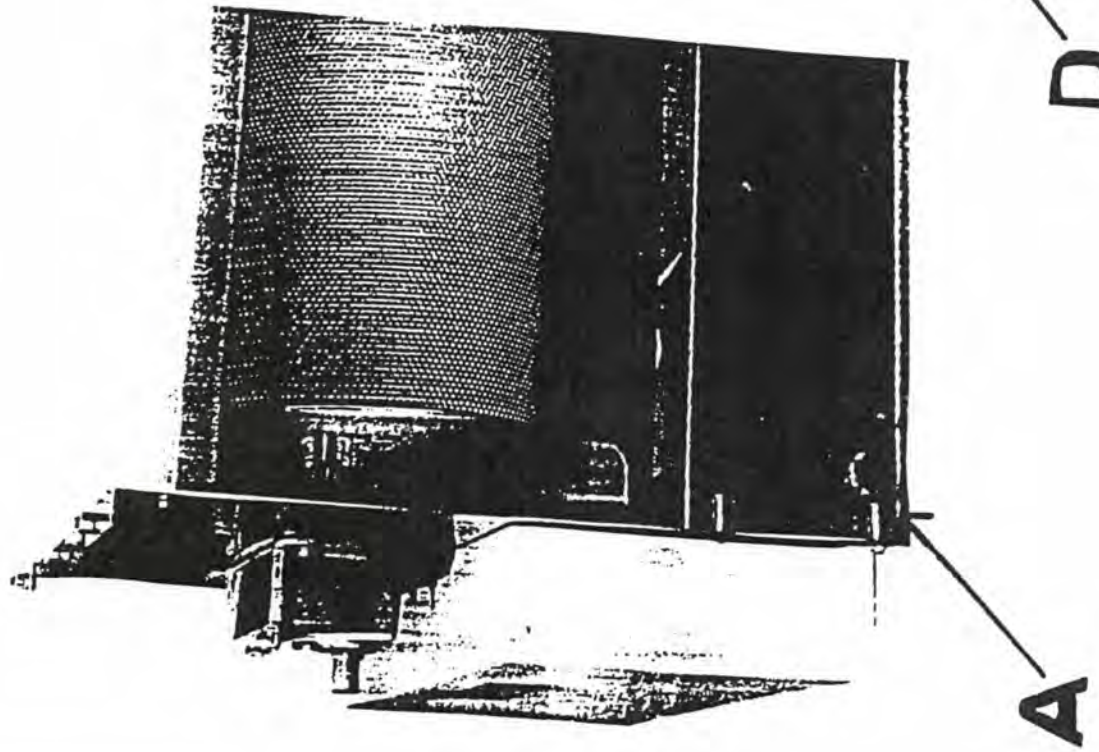
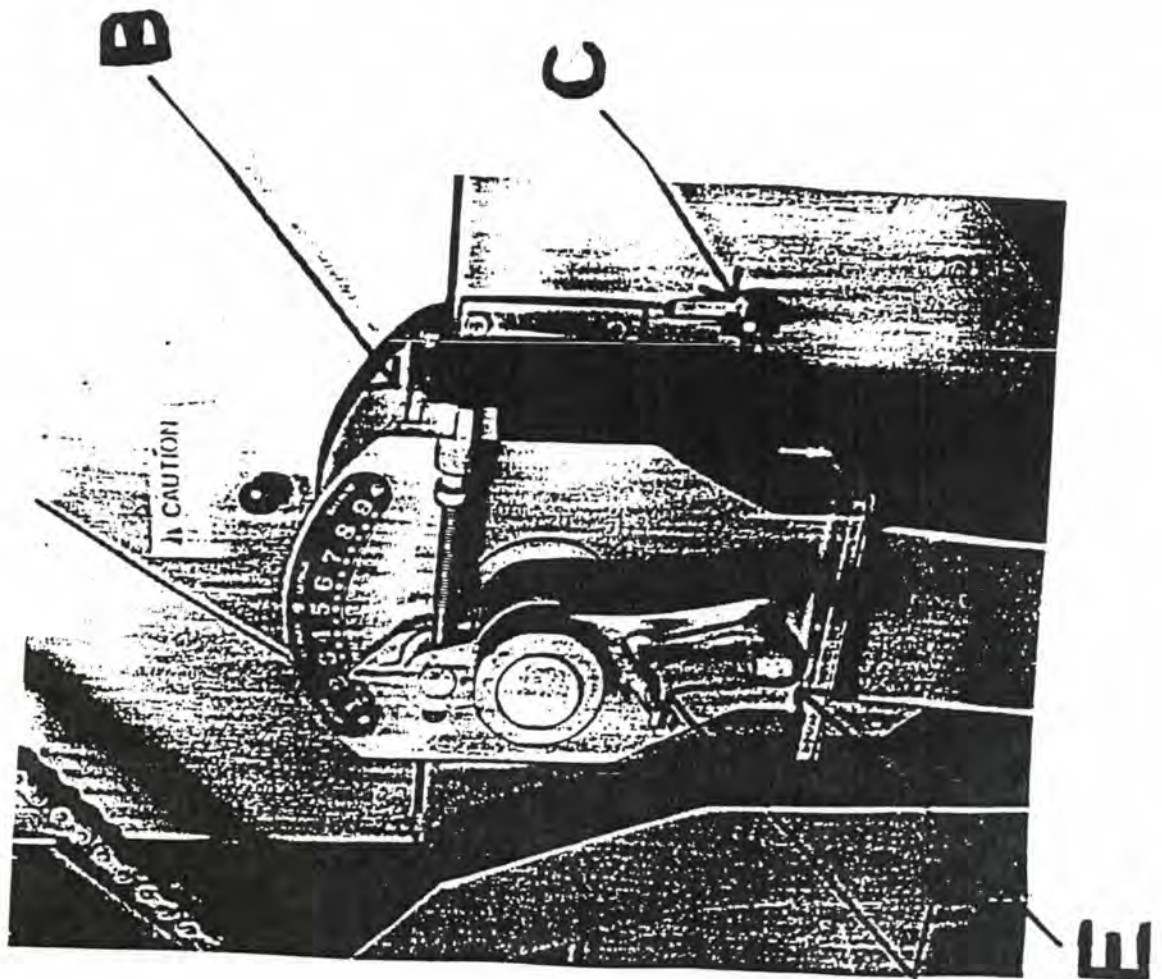
Once the shell is properly installed, the side panels can be replaced and the unit is ready to accept product.

CAPACITY AND SURGE FEEDING

There is an inherent danger of poor sizing or cleaning results when running machines well below stated capacities. This is particularly true with machines using air to clean with, such as scalperators and aspirators. Low feed rates could cause uneven distribution of product across the width of the machine, allowing air to bypass the product.

For best results, stay within stated low and high capacity recommendations and avoid surging of product into any machine. A steady, even flow at the inlet will provide the uniform results you are looking for.

WHEN MAKING REFERENCE TO THIS MACHINE, BE SURE
TO GIVE THE STYLE NUMBER AND SERIAL NUMBER.



Parts Lists

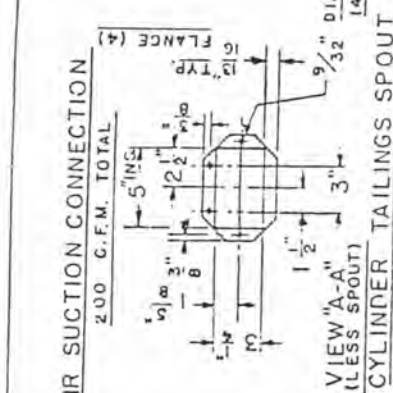
No. 3 LC Uniflow

	Style	Part Number
Standard Machine	CZG2	49620
Standard Machine	CZH2	49621
Standard Machine	CZJ2	49622
Flow 2A	CZH2	48183
Flow 2B	CZH2	48184
Flow 3A	CZJ2	48186
Flow 3E	CZJ2	48609
Flow 3F	CZJ2	48593
Standard Motor Control Kit	all styles	47748
Remote Motor Control Kit	all styles	47747

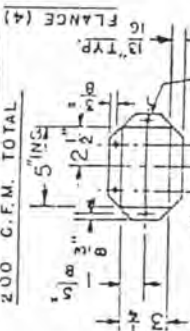
Drawing List

No. 3 LC Uniflow

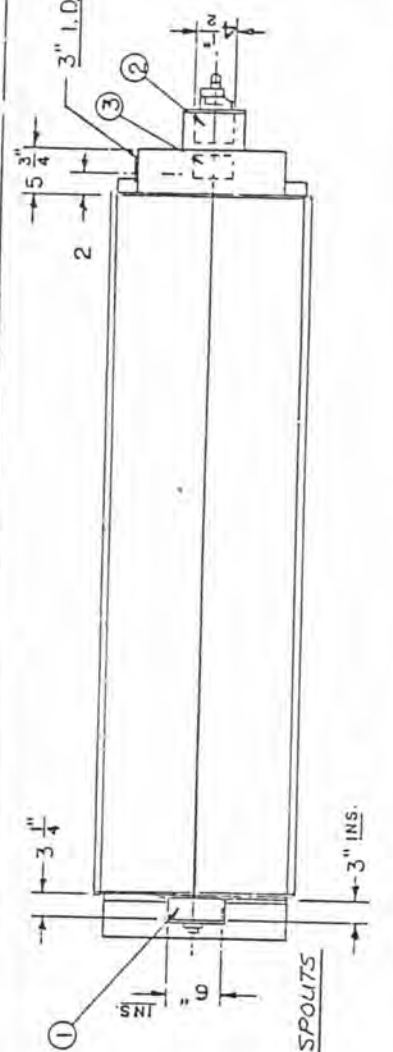
Style	CZG2 (1-Hi)	CZH2 (2-Hi)	CZJ2 (3-Hi)
Installation Data (single machine or Flows 2B & 3F)	CD-B3571	CD-B3571	CD-B3571
Installation Data,with Feeder	CD-B8588		
Installation Data (Flow 2A)		CD-C3313	
Installation Data (with Gravity Feeder)		CD-C3441	
Installation Data (Flow 3A)			CD-C3314
Installation Data (Flow 3E)			CD-B1812
Installation Data (with Gravity Feeder)			CD-C3290
General Assembly, Gravity Feeder Attachment		CD-C3312	CD-D2685
Data Application, Feed Hopper without Tach.	CD-C3136	CD-C3136	CD-C3136
Data Application, Feed Hopper withTach.	CD-C4486	CD-C4486	CD-C4486
Remote Motor Control Assembly	CD-C3225	CD-C3225	CD-C3225
Split Cylinder Assembly	CD-C4031	CD-C4031	CD-C4031
General Assembly	CD-D3936	CD-D3936	CD-D3936
Cylinder Shaft & Trough Assembly	CD-D3935	CD-D3935	CD-D3935



3" I.D. AIR SUCTION CONNECTION
200 G.F.M. TOTAL

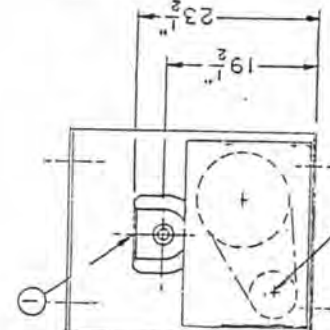
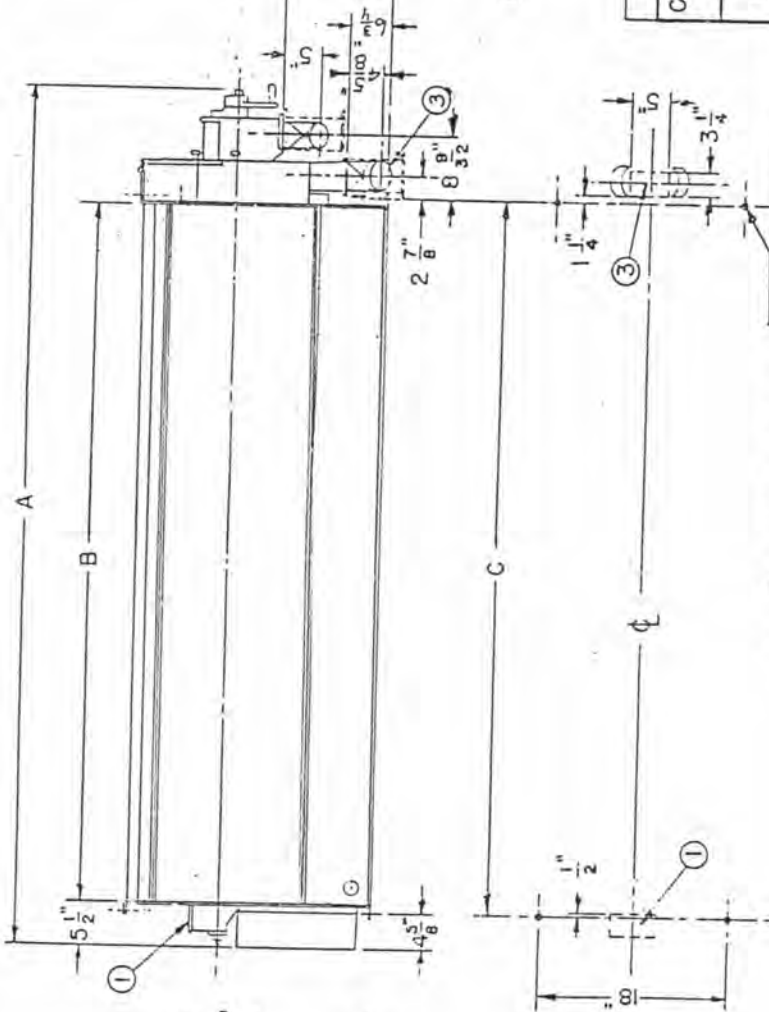
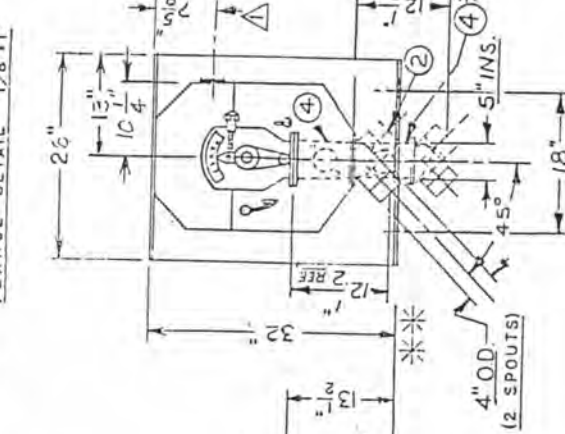


VIEW "A-A"
(LESS SPOUT)
CYLINDER TAILINGS SPOUT
FLANGE DETAIL 1/8" x 1"



- ① FEED SPOUT
- ② CYLINDER LIFTINGS
- ③ CYLINDER TAILINGS
- ④ SAMPLING SPOUT(OPTIONAL)

** BASE EXTENDED 9" w/ OPT SPOUTS



MOTOR: 1/2 H.P. @
1200 R.P.M. Δ

MACH.	A	B	C
NO. 3	9'-2 1/8"	7'-6"	7'-7 3/4"

NO	BY	DATE	REMARKS
1	KE	5/18/57	W/S 6 5/8"
2	X	10/19/57	W/S 5 1/2"
3	JL	9/21/57	W/S 17.75"

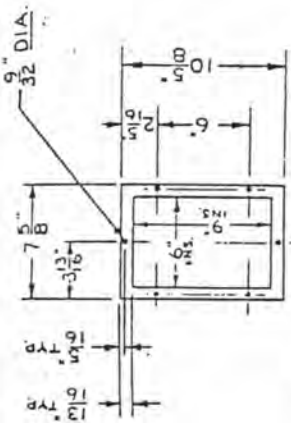
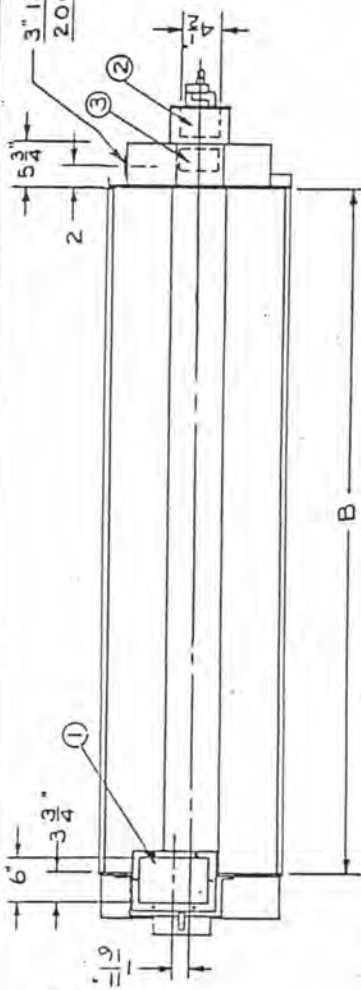
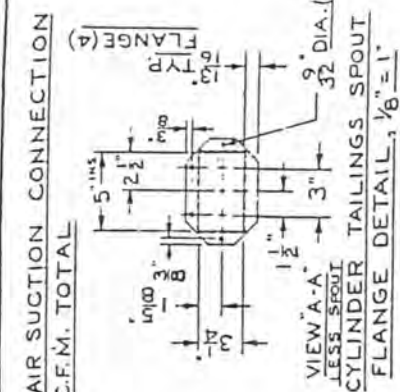
4-1/2" D. ANCHOR BOLTS

STYLE NO. CZG2	1200 RPM DRIVE
STYLE NO. CWB1	1800 RPM DRIVE

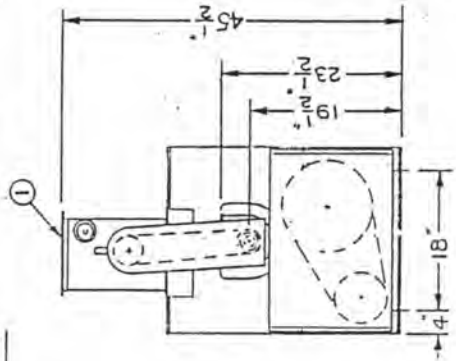
CYLINDER SEPARATOR
CARTER-DAY COMPANY
MINNEAPOLIS, MINNESOTA

DATA, INSTALLATION
NO. 3 UNIFLOW L.C.
DRAWN BY Δ 3-25-57 SCALE 3/4" = 1'-0"
CHECKED BY
APPROVED BY
SHEET OF

CD-B3571



FEED HOPPER FLANGE DETAIL
1/8" = 1"

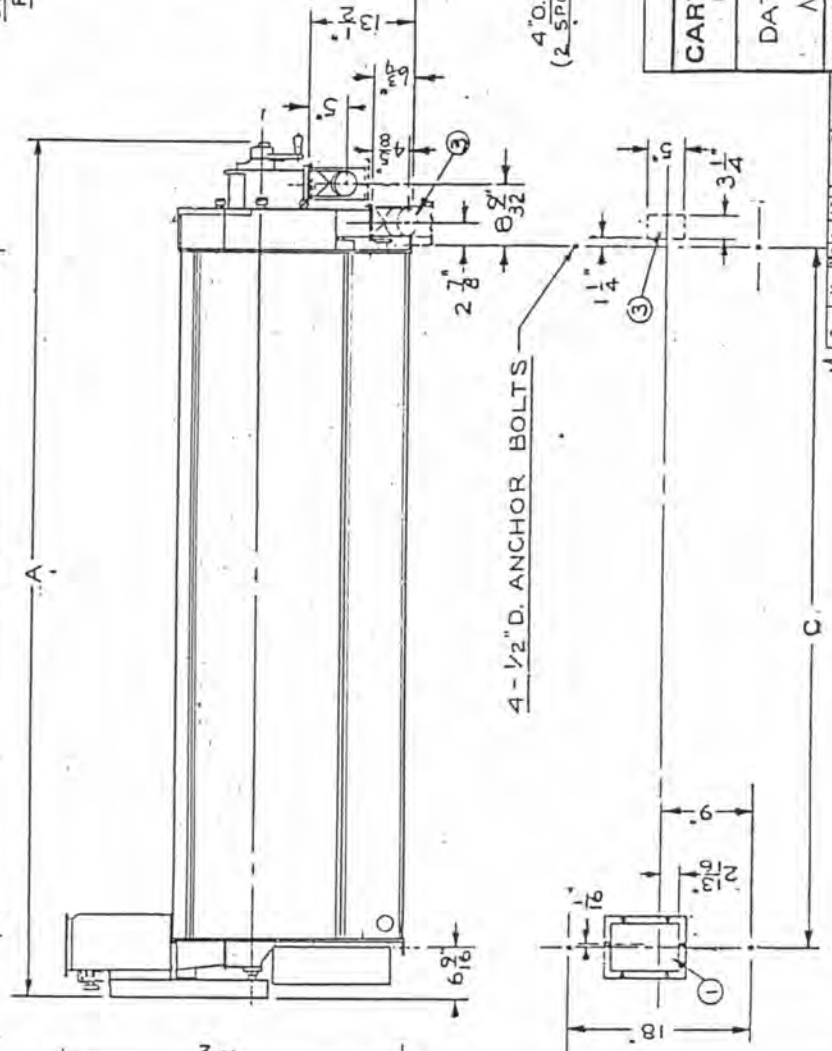


MOTOR: 1/2 H.P. @
1725 R.P.M.

- ① FEED HOPPER
- ② CYLINDER LIFTINGS
- ③ CYLINDER TAILINGS
- * ④ SAMPLING SPOUT (OPTIONAL)

MACH.	A	B	C
N ^o . 3	9'-4 1/16"	7'-6"	7'-7 3/4"

** BASE EXTENDED 9" w/OPT. SPOUTS



CYLINDER SEPARATOR
CARTER-DAY COMPANY
MINNEAPOLIS, MINNESOTA

DATA, INSTALLATION
N^o. 3 HART UNI-FLOW

SCALE NONE
DRAWN BY P.A.R. 8-1-85
CHECKED BY
APPROVED BY

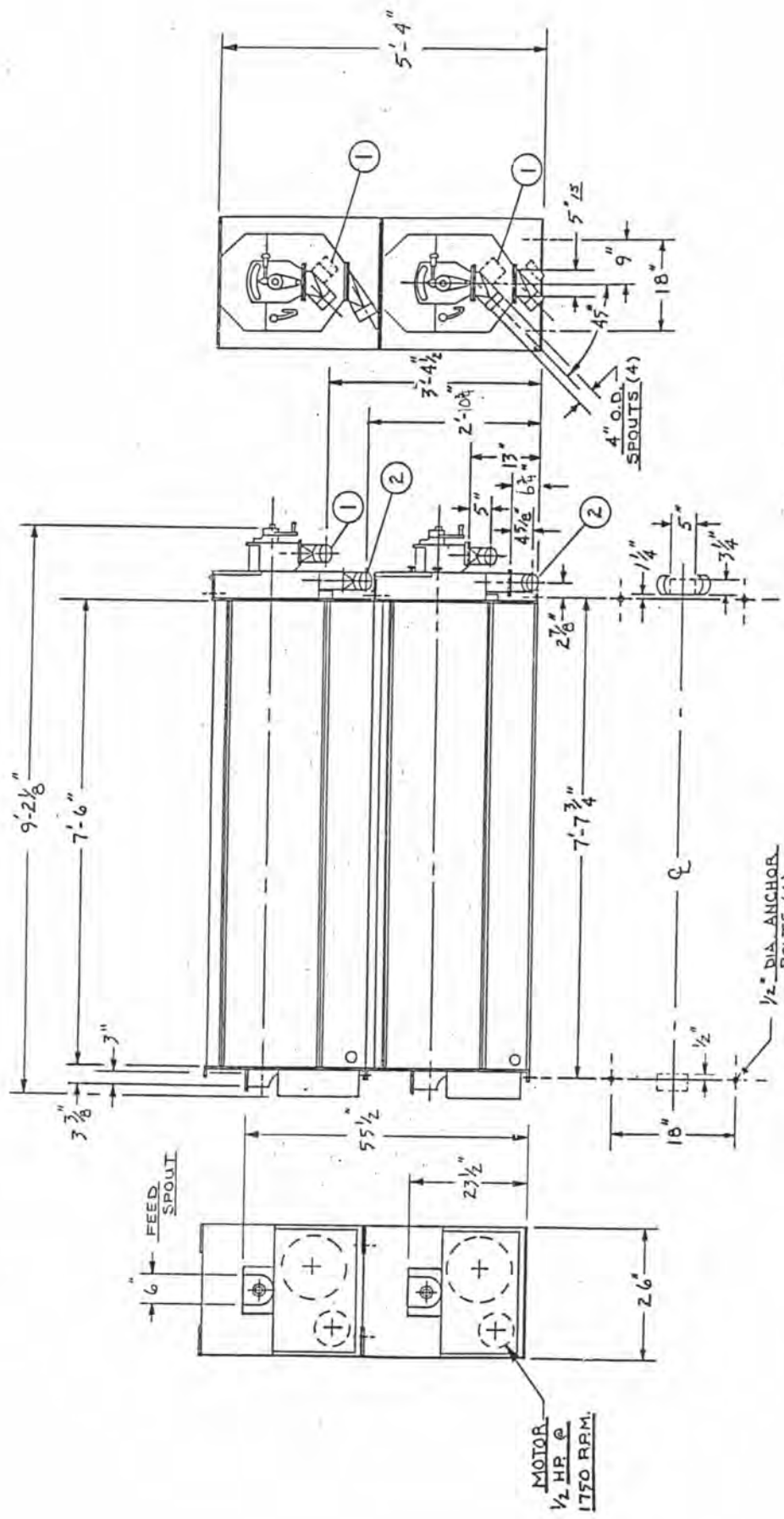
REVISIONS

NO.	BY	DATE	REMARKS
1	MB	4-85	1 1/16" WAS 1/4"
2	LV	10-85	6 3/4" SIZE 5"

CD-B 3588

STYLE NO. CWBI

- ① CYLINDER LIFTINGS
- ② CYLINDER TAILINGS



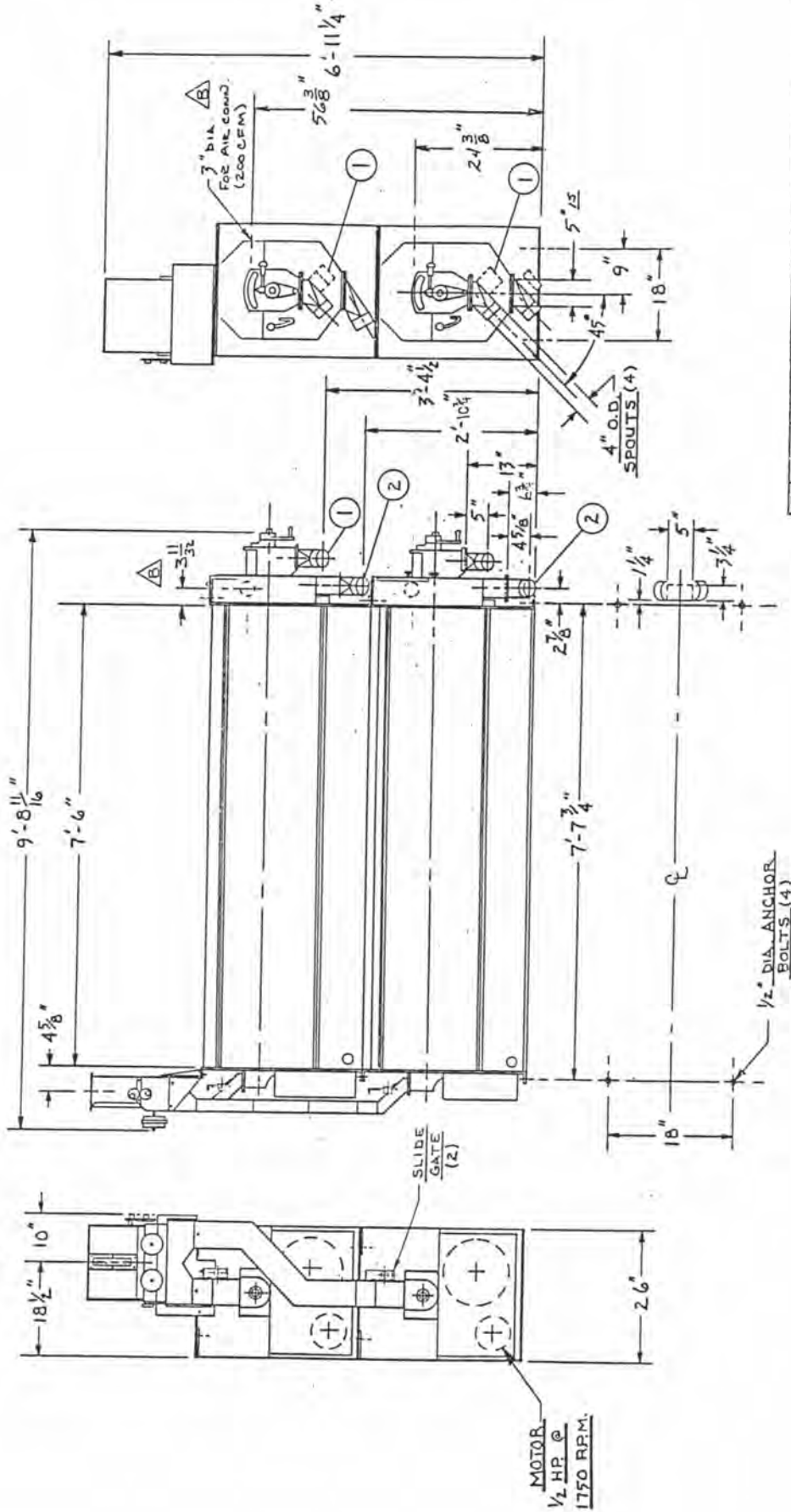
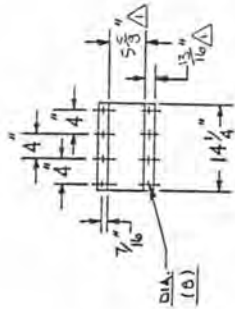
ITEM	CITY, RECD.	PART NO.	DRAWING	DESCRIPTION
3	1	33515	CD-B997	SPOUT, ADAPTER TAILINGS
2	1	31947	CD-B 510	" " " "
1	2	60527	66-7054	" " " LIFTINGS

Carter-Day Company
 500 7th Ave. N.E., Minneapolis, MN 55412
 DATA INSTALLATION
 Z HI - # 7 UNI-FLOW (LC)
 (ZA)

TOLEANCES UNLESS SPECIFIED

PART NO.

- ① CYLINDER LIFTINGS
- ② CYLINDER TAILINGS



ITEM	QTY.	PART NO.	DRAWING	DESCRIPTION
3	1	33515	GD-B997	SPOUT, ADAPTER TAILINGS
2	1	31947	CB-B 510	" "
1	2	60527	SC-3054	" " LIFTINGS

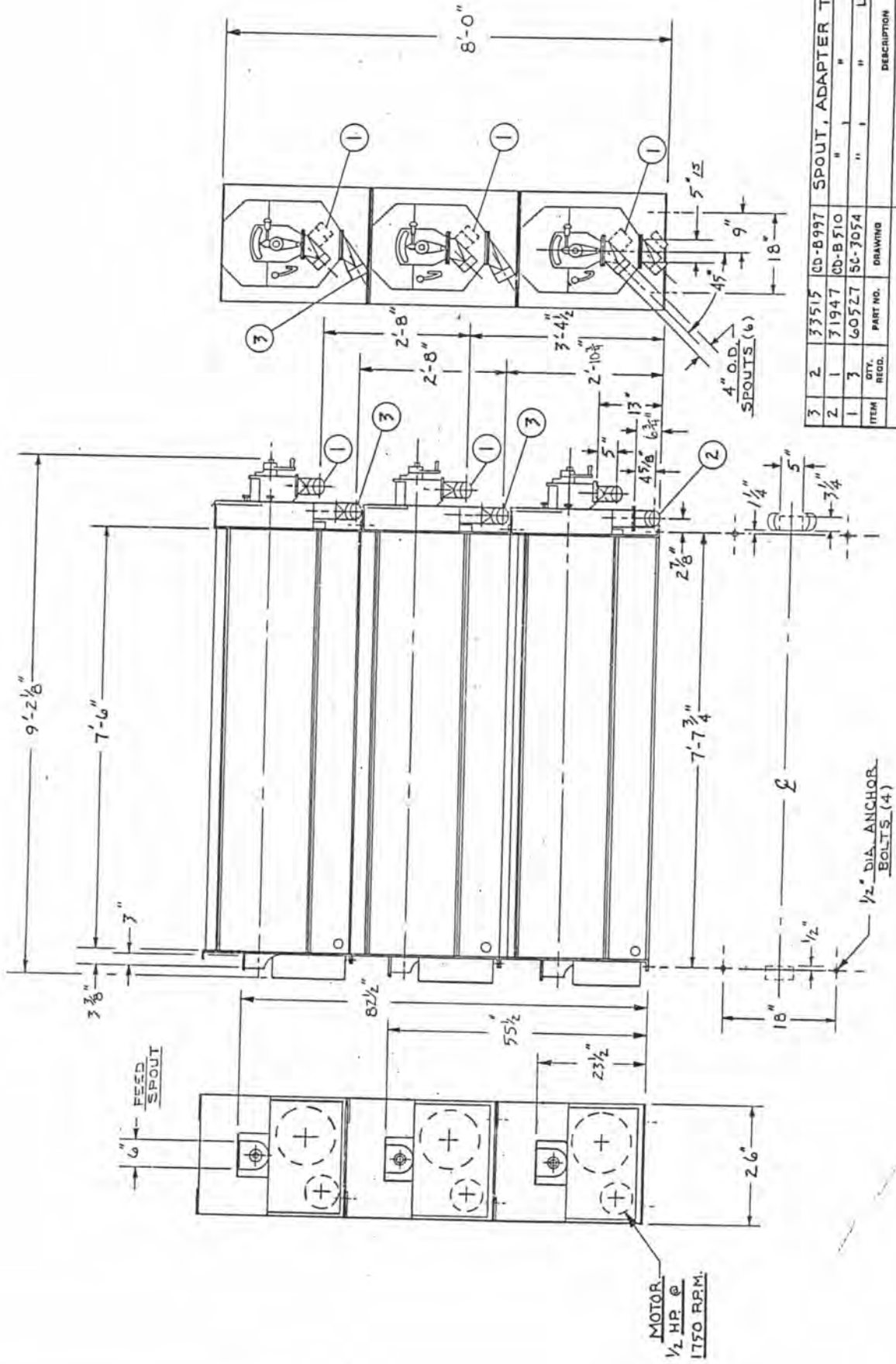
Carter-Day Company
 900 7th Ave. N.E., Minneapolis, MN 55432

DATA INSTALLATION
 Z HI - #3 UNI-FLOW (LC)
 W / GRAVITY FEEDER

NO.	REV.	DATE	BY	APP.	DESCRIPTION
B	1				ADD AIR COND
A	1				TO DRAWING
					2 1/4 WAS 5/2, 2-10 1/4 WAS 2-8, 1-1/2 WAS 5/2, 1-1/2 WAS 5/2

TOLERANCES UNLESS SPECIFIED

PART NO.



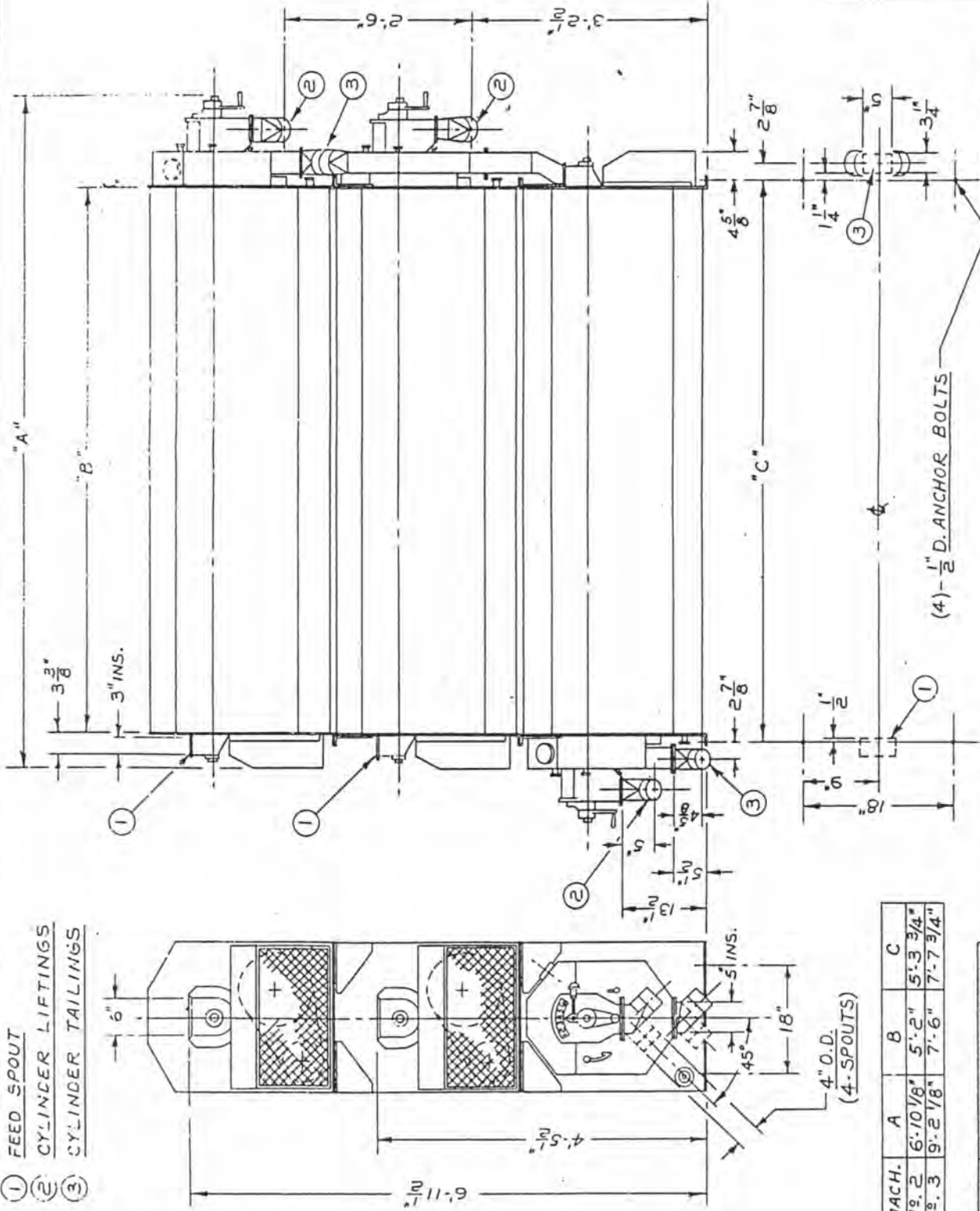
ITEM	QTY.	REQD.	PART NO.	DRAWING	DESCRIPTION
3	2	33515	CD-B997		SPOUT, ADAPTER TAILINGS
2	1	31947	CD-B510		" " " "
1	3	60527	SC-3054		" " " LIFTINGS

Carter-Day Company
 300 2nd Ave. N.E., Minneapolis, MN 55432

DATA INSTALLATION
 3 HI - #3 UNI-FLOW (L.C)
 (3A)

PART NO.

- ① FEED SPOUT
- ② CYLINDER LIFTINGS
- ③ CYLINDER TAILINGS



MACH.	A	B	C
N ^{o.} 2	6'-10 1/8"	5'-2"	5'-3 3/4"
N ^{o.} 3	9'-2 1/8"	7'-6"	7'-7 3/4"

N^{o.} 2 # 3 HART UNI-FLOW
CYLINDER SEPARATOR 3-HIGH (3E-FLOW)

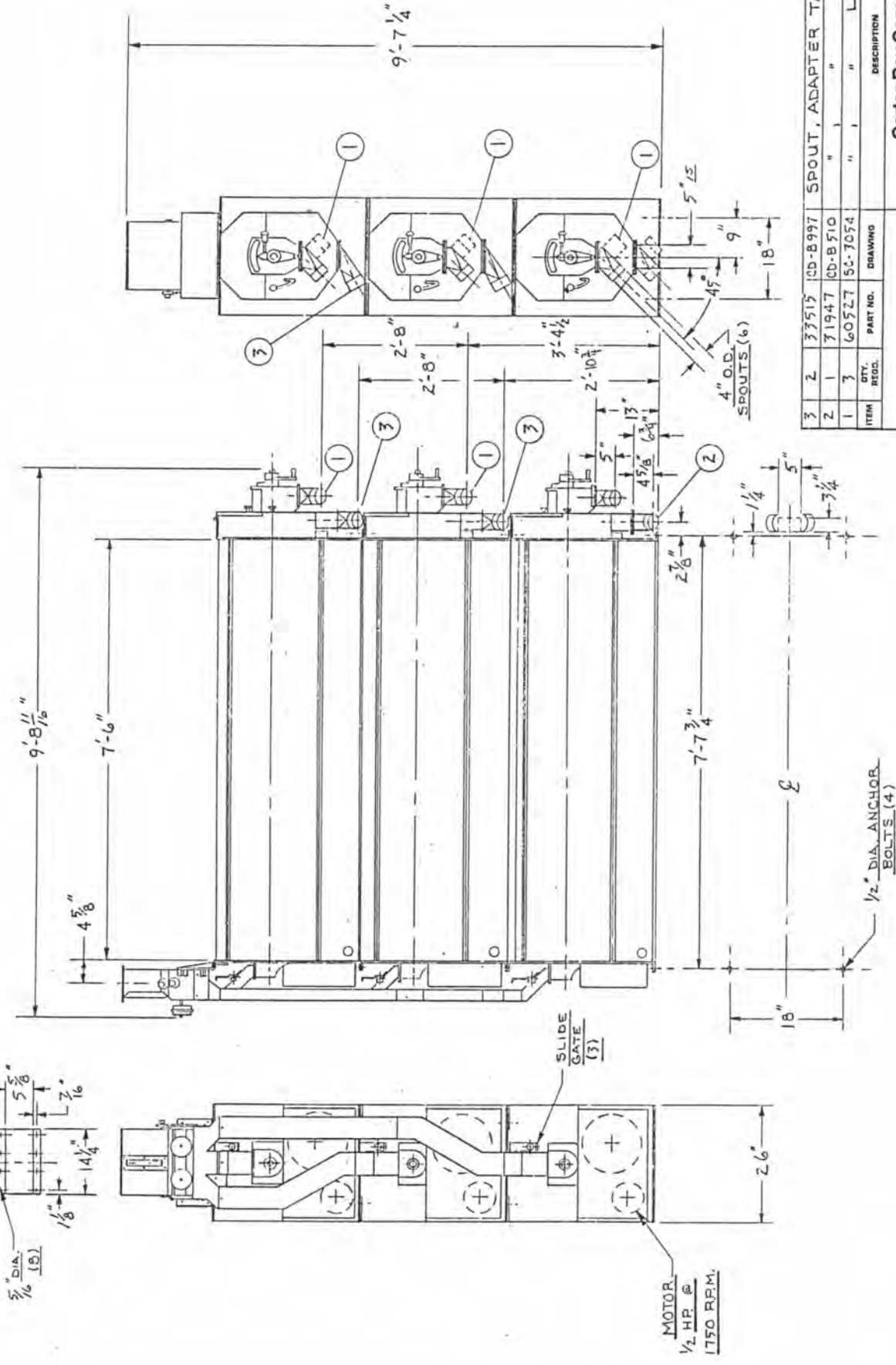
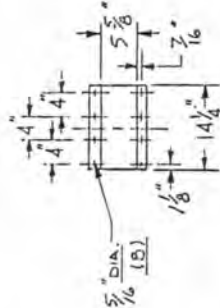
CEA-CARTERDAY COMPANY
Minneapolis, Minnesota

DATA, INSTALLATION

DRAWN BY J.N. DATE 8-5-75 SCALE 3/4" = 1"
CHECKED BY K.E.E. B-5-75
APPROVED BY _____
SHEET _____ OF _____

NO.	BY	DATE	REVISIONS	REMARKS

CD-B 181C



ITEM	QTY.	REGD.	PART NO.	DRAWING	DESCRIPTION
3	2		33519	CD-B997	SPOUT, ADAPTER TAILINGS
2	1		31947	CD-B510	"
1	3		60527	5C-7054	"
					LIFTINGS

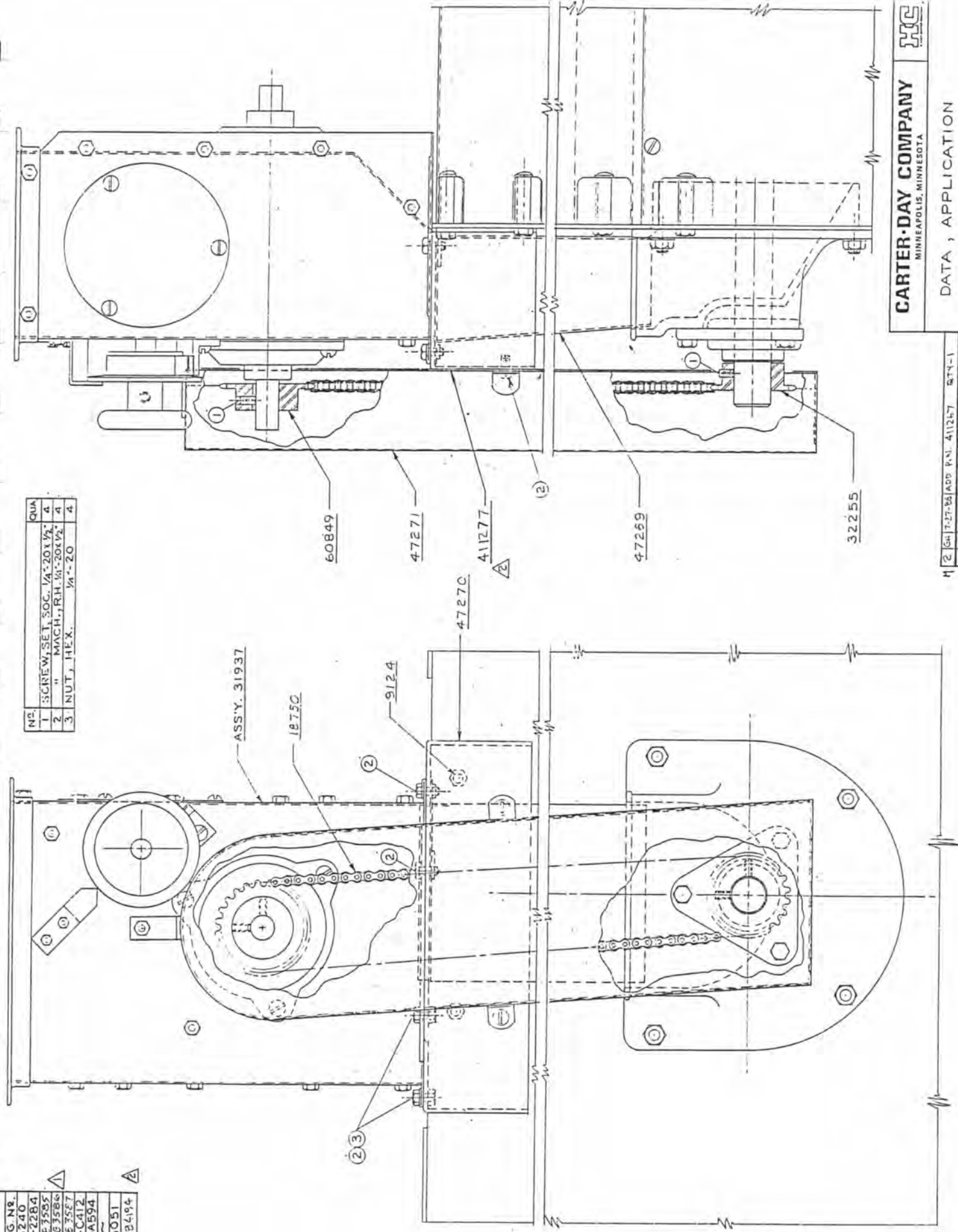
Carter-Day Company
 500 730 Ave. N.E., Minneapolis, MN 55412

DATA INSTALLATION
 3 HI - #7 UNI-FLOW (LC)
 W/ GRAVITY FEEDER

PART NO.

PART NO.	DRG. NR.
16231	25240
60849	SC-2284
47269	CD-F-3595
7270	D-63566
47271	5-3587
31937	CO-C412
32255	CD-A594
9124	25051
411277	CD-24194

NO.	DESCRIPTION	QUA.
1	SCREW, SET, SOC. 1/4" x 20 x 1/2"	4
2	" MACH. 1/4" x 20 x 1/2"	4
3	NUT, HEX. 1/4" x 20	4



CARTER-DAY COMPANY
MINNEAPOLIS, MINNESOTA

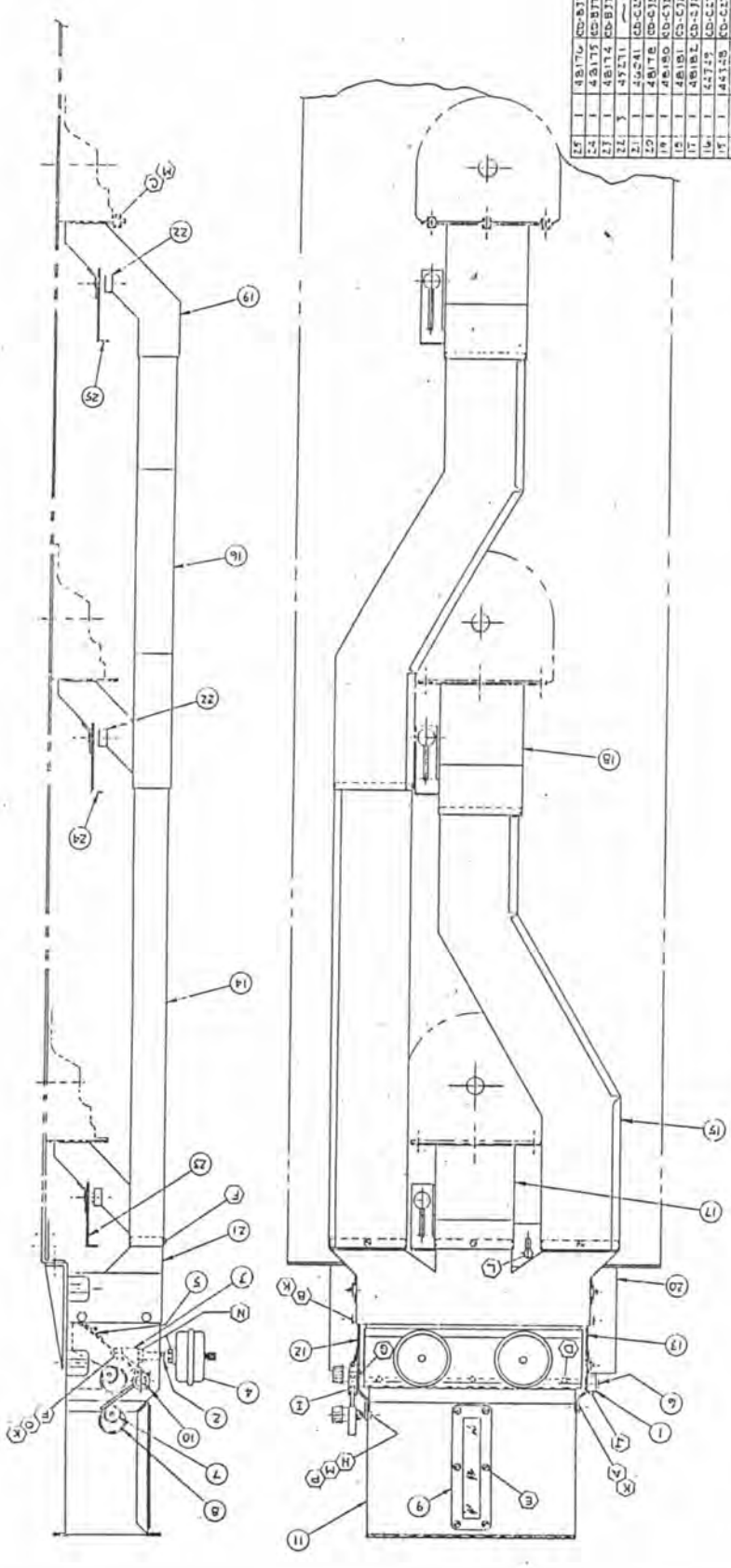
DATA, APPLICATION

FEED HOPPER BODY FOR NO. 3 UNIFLOW L. C.

1	2	3	4	5	6	7	8	9	10
1	M								
NO. BY	DATE	LOCATION	REVISION						



ITEM	QTY	PART
A	2	SCREEN, MISC 1/2" x 20" x 1'
B	2	" " " " " " " " " " " " " " " "
C	11	" " " " " " " " " " " " " " " "
D	1	" " " " " " " " " " " " " " " "
E	6	" " " " " " " " " " " " " " " "
F	9	" " " " " " " " " " " " " " " "
G	1	" " " " " " " " " " " " " " " "
H	1	" " " " " " " " " " " " " " " "
I	1	" " " " " " " " " " " " " " " "
J	1	" " " " " " " " " " " " " " " "
K	10	PLUG, MISC 1/2" x 20"
L	3	" " " " " " " " " " " " " " " "
M	11	" " " " " " " " " " " " " " " "
N	4	" " " " " " " " " " " " " " " "
O	6	WASHER, LOCK 1/2"
P	1	" " " " " " " " " " " " " " " "



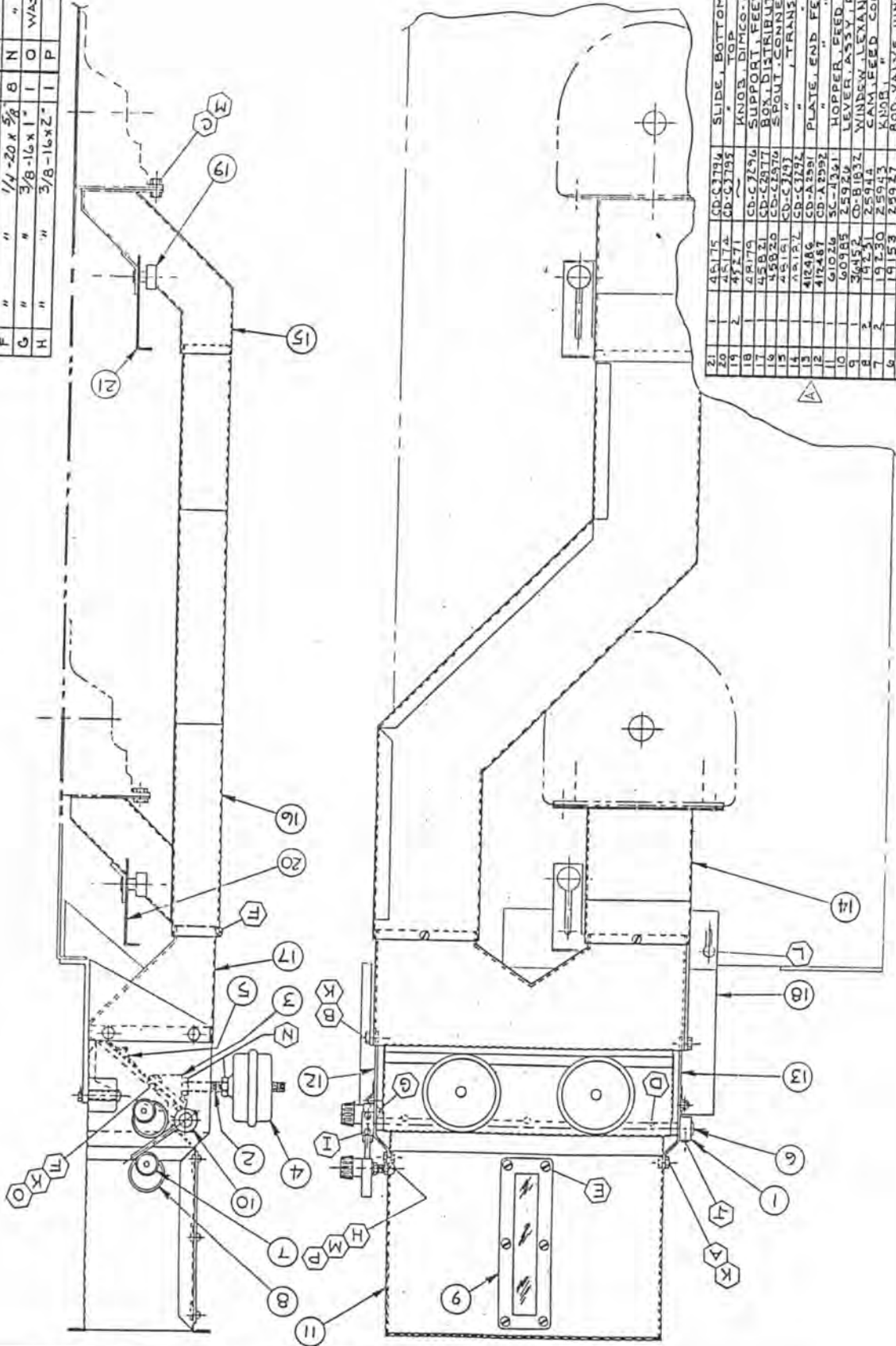
24	1	48176	CD-5171	SLIDE, BOTTOM
25	1	48175	CD-5170	" " " " " " " " " " " " " " " "
26	1	48174	CD-5170	" " " " " " " " " " " " " " " "
27	1	48173	CD-5170	" " " " " " " " " " " " " " " "
28	3	48172	CD-5170	" " " " " " " " " " " " " " " "
29	1	48171	CD-5170	" " " " " " " " " " " " " " " "
30	1	48170	CD-5170	" " " " " " " " " " " " " " " "
31	1	48169	CD-5170	" " " " " " " " " " " " " " " "
32	1	48168	CD-5170	" " " " " " " " " " " " " " " "
33	1	48167	CD-5170	" " " " " " " " " " " " " " " "
34	1	48166	CD-5170	" " " " " " " " " " " " " " " "
35	1	48165	CD-5170	" " " " " " " " " " " " " " " "
36	1	48164	CD-5170	" " " " " " " " " " " " " " " "
37	1	48163	CD-5170	" " " " " " " " " " " " " " " "
38	1	48162	CD-5170	" " " " " " " " " " " " " " " "
39	1	48161	CD-5170	" " " " " " " " " " " " " " " "
40	1	48160	CD-5170	" " " " " " " " " " " " " " " "
41	1	48159	CD-5170	" " " " " " " " " " " " " " " "
42	1	48158	CD-5170	" " " " " " " " " " " " " " " "
43	1	48157	CD-5170	" " " " " " " " " " " " " " " "
44	1	48156	CD-5170	" " " " " " " " " " " " " " " "
45	1	48155	CD-5170	" " " " " " " " " " " " " " " "
46	1	48154	CD-5170	" " " " " " " " " " " " " " " "
47	1	48153	CD-5170	" " " " " " " " " " " " " " " "
48	1	48152	CD-5170	" " " " " " " " " " " " " " " "
49	1	48151	CD-5170	" " " " " " " " " " " " " " " "
50	1	48150	CD-5170	" " " " " " " " " " " " " " " "
51	1	48149	CD-5170	" " " " " " " " " " " " " " " "
52	1	48148	CD-5170	" " " " " " " " " " " " " " " "
53	1	48147	CD-5170	" " " " " " " " " " " " " " " "
54	1	48146	CD-5170	" " " " " " " " " " " " " " " "
55	1	48145	CD-5170	" " " " " " " " " " " " " " " "
56	1	48144	CD-5170	" " " " " " " " " " " " " " " "
57	1	48143	CD-5170	" " " " " " " " " " " " " " " "
58	1	48142	CD-5170	" " " " " " " " " " " " " " " "
59	1	48141	CD-5170	" " " " " " " " " " " " " " " "
60	1	48140	CD-5170	" " " " " " " " " " " " " " " "
61	1	48139	CD-5170	" " " " " " " " " " " " " " " "
62	1	48138	CD-5170	" " " " " " " " " " " " " " " "
63	1	48137	CD-5170	" " " " " " " " " " " " " " " "
64	1	48136	CD-5170	" " " " " " " " " " " " " " " "
65	1	48135	CD-5170	" " " " " " " " " " " " " " " "
66	1	48134	CD-5170	" " " " " " " " " " " " " " " "
67	1	48133	CD-5170	" " " " " " " " " " " " " " " "
68	1	48132	CD-5170	" " " " " " " " " " " " " " " "
69	1	48131	CD-5170	" " " " " " " " " " " " " " " "
70	1	48130	CD-5170	" " " " " " " " " " " " " " " "
71	1	48129	CD-5170	" " " " " " " " " " " " " " " "
72	1	48128	CD-5170	" " " " " " " " " " " " " " " "
73	1	48127	CD-5170	" " " " " " " " " " " " " " " "
74	1	48126	CD-5170	" " " " " " " " " " " " " " " "
75	1	48125	CD-5170	" " " " " " " " " " " " " " " "
76	1	48124	CD-5170	" " " " " " " " " " " " " " " "
77	1	48123	CD-5170	" " " " " " " " " " " " " " " "
78	1	48122	CD-5170	" " " " " " " " " " " " " " " "
79	1	48121	CD-5170	" " " " " " " " " " " " " " " "
80	1	48120	CD-5170	" " " " " " " " " " " " " " " "
81	1	48119	CD-5170	" " " " " " " " " " " " " " " "
82	1	48118	CD-5170	" " " " " " " " " " " " " " " "
83	1	48117	CD-5170	" " " " " " " " " " " " " " " "
84	1	48116	CD-5170	" " " " " " " " " " " " " " " "
85	1	48115	CD-5170	" " " " " " " " " " " " " " " "
86	1	48114	CD-5170	" " " " " " " " " " " " " " " "
87	1	48113	CD-5170	" " " " " " " " " " " " " " " "
88	1	48112	CD-5170	" " " " " " " " " " " " " " " "
89	1	48111	CD-5170	" " " " " " " " " " " " " " " "
90	1	48110	CD-5170	" " " " " " " " " " " " " " " "
91	1	48109	CD-5170	" " " " " " " " " " " " " " " "
92	1	48108	CD-5170	" " " " " " " " " " " " " " " "
93	1	48107	CD-5170	" " " " " " " " " " " " " " " "
94	1	48106	CD-5170	" " " " " " " " " " " " " " " "
95	1	48105	CD-5170	" " " " " " " " " " " " " " " "
96	1	48104	CD-5170	" " " " " " " " " " " " " " " "
97	1	48103	CD-5170	" " " " " " " " " " " " " " " "
98	1	48102	CD-5170	" " " " " " " " " " " " " " " "
99	1	48101	CD-5170	" " " " " " " " " " " " " " " "
100	1	48100	CD-5170	" " " " " " " " " " " " " " " "

Carter-Day Company
 301 1/2 ST. ALBERT, ALA.
 ASS'Y, GENERAL
 GRAVITY FEEDER ATTACHMENT
 7 HI LC UNI-FLOW
 DRAWN BY: MJB DATE: 5-21-58
 CHECKED BY: JTB DATE: 5-21-58
 APPROVED BY: JTB DATE: 5-21-58
 CD-D-266

PART NO.
48173

UNFINISHED DIMENSIONS INDICATED
 ALL DIMENSIONS UNLESS OTHERWISE SPECIFIED
 1/8" = 1/8" UNLESS OTHERWISE SPECIFIED
 ALL DIMENSIONS UNLESS OTHERWISE SPECIFIED
 DO NOT SCALE DRAWING

No.	QTY.	DESCRIPTION
A	1	SCREW HHCS 1/4"-20 x 3/8"
B	1	" " " " 1/4"-20 x 1/2"
C	1	" " " " 3/8"-16 x 3/4"
D	1	" " RHMS 10-24 x 1/2"
E	1	" " " " 1/4"-20 x 3/8"
F	1	" " " " 1/4"-20 x 1/2"
G	1	" " " " 3/8"-16 x 1"
H	1	" " " " 3/8"-16 x 2"
I	1	" " " " " " " " " " " "
J	1	" " " " " " " " " " " "
K	1	" " " " " " " " " " " "
L	1	" " " " " " " " " " " "
M	1	" " " " " " " " " " " "
N	1	" " " " " " " " " " " "
O	1	" " " " " " " " " " " "
P	1	" " " " " " " " " " " "



ITEM	QTY.	RECD.	PART NO.	DRAWING	DESCRIPTION
21	1		44175	CD-C3784	SLIDE, BOTTOM
20	1		45174	CD-C3784	KNIB, TOP
19	1		45271	CD-C3784	SUPPORT FEEDER
18	1		44179	CD-C3784	BOX DISTRIBUTION
17	1		45271	CD-C3784	SPOUT CONNECTION
16	1		45161	CD-C3784	TRANSITION BOTTOM
15	1		45172	CD-C3784	PLATE, END FEED HOPPER
14	1		41246	CD-A2581	HOPPER, FEED
13	1		41247	CD-A2582	LEVER, ASSY FEED CONTROL
12	1		60946	SC-A241	WINDOW, ALEXAN
11	1		30453	CD-A2582	CAM, FEED CONTROL
10	1		19130	CD-A2582	ROCK
9	1		19153	25043	VALVE HINGE 5/8" D.
8	1		17923	24724	WEIGHT FEED
7	1		17923	24724	WEIGHT FEED
6	1		16188	25227	BRACKET, BALANCE LEVER
5	1		15468	24887	STUD
4	1		31114		SET COLLAR 1.030 ID. x 1.188 O.D.

Carter-Day Company
 500 73rd Ave. N.E., Minneapolis, MN 55432

ASS'Y. GENERAL GRAVITY FEEDER ATTACHMENT

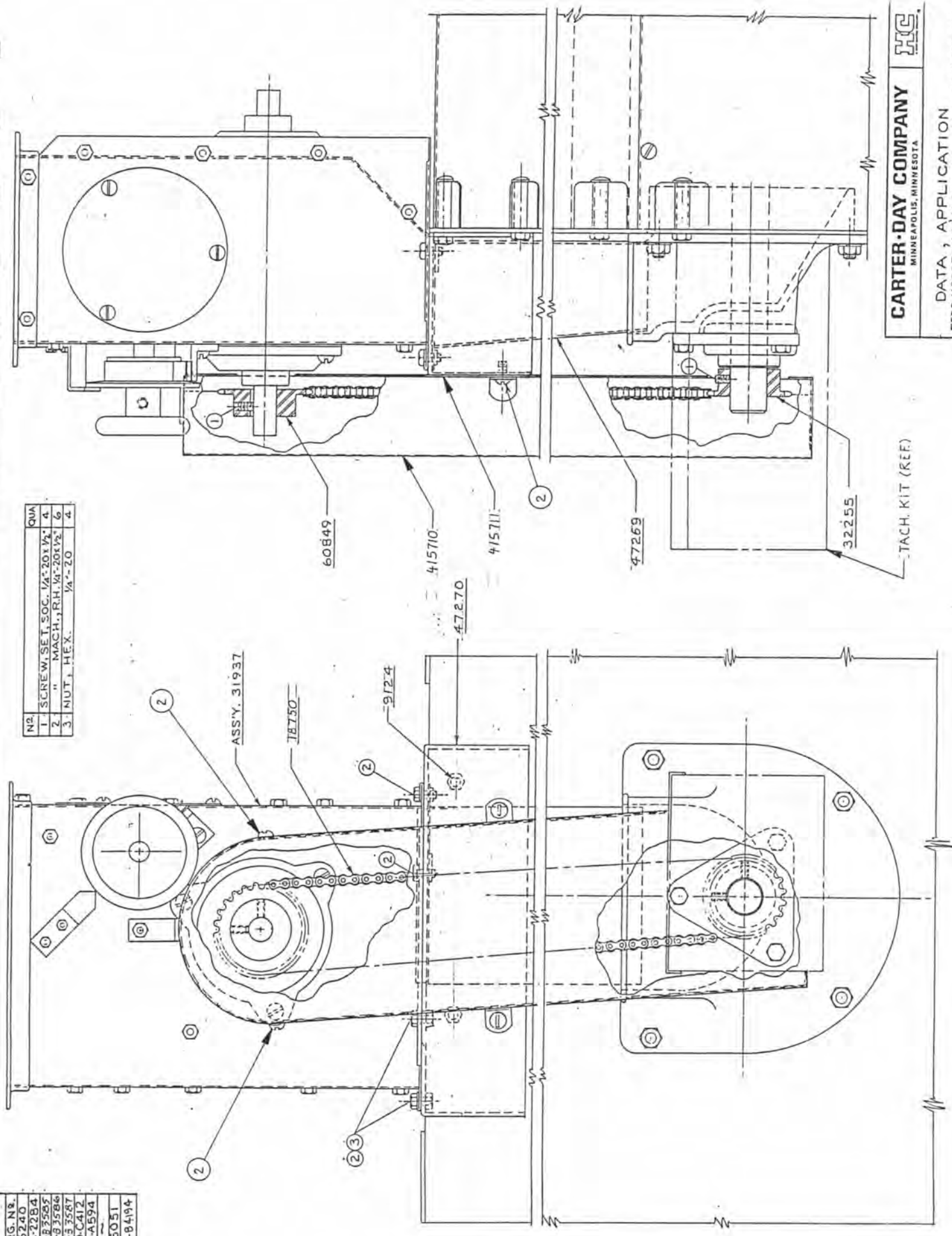
48177

41246 WAS 61020
 41247 WAS 61020

TOLERANCES UNLESS OTHERWISE SPECIFIED

ART. NO.	DRG. NO.
5231	25240
0849	SC-2284
7269	CD-B-3585
7270	CD-B-3586
7271	CD-B-3587
31937	CD-C412
12255	CD-A594
9750	---
9124	25051
11277	CD-8494

NO.	DESCRIPTION	QTY.
1.	SCREW, SET, SOC. 1/4" x 20 x 1/2"	4
2.	" " MACH., R.H. 1/4" x 20 x 1/2"	6
3.	NUT, HEX. 1/4" x 20	4

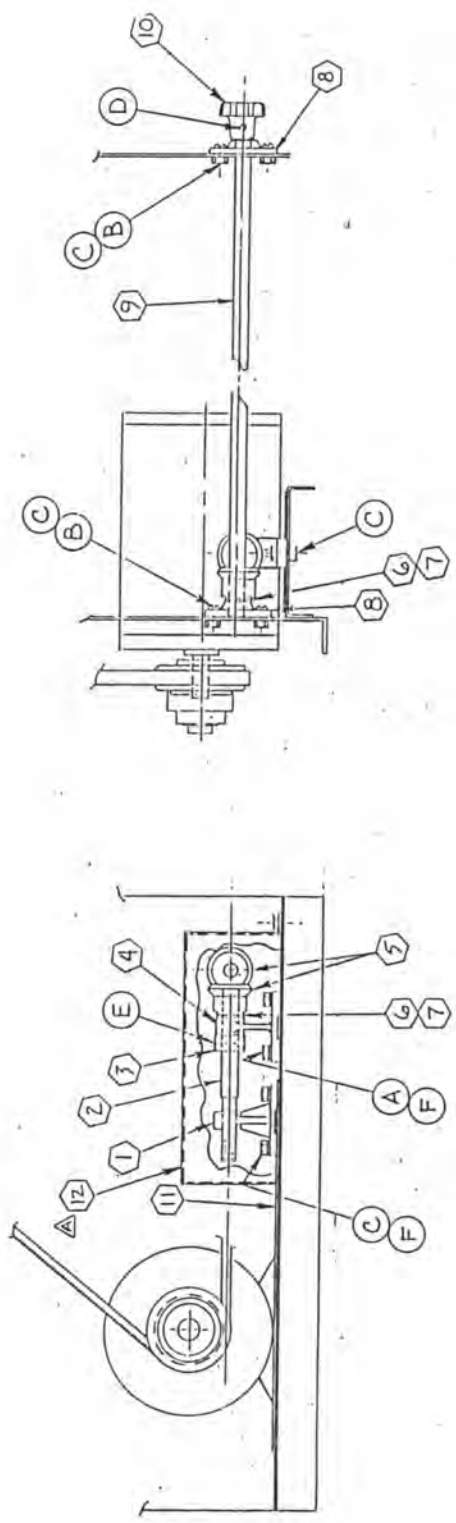


CARTER-DAY COMPANY
MINNEAPOLIS, MINNESOTA

DATA, APPLICATION
FEED HOPPER ASSY FOR NO.3 UNIFLOW LC W/TACH KIT

TACH. KIT (REF)

A	2	CD-10	HMU	3/16	8	x 1/4
B	4	88422	RMS	"	"	x 5/8"
C	6	88257	NUT	"	"	"
D	1	88299	SHSS	1/4"	20	x 1/4"
E	1	88310	"	3/8"	16	x 3/8"
F	4	88473	WASHER	LOCK	5/16"	"



ITEM	QTY.	RECD.	PART NO.	DRAWING	DESCRIPTION
13	1		32573	CD-A607	LABEL, SPEED CONTROL (NOT SHOWN ON DWG)
12	1		411541	CD-84223	DUST GUARD
11	1		SEE FIG		PLATE, MOTOR SUPPORT SLIDE
10	1		20260	26176	CONTROL - MOTOR SPEED, 5/8"
9	1		51104	CD-A215	ROD, SPEED CONTROL 5/8" D.
8	2		1478	20097	BRG., 5/8" Δ SHAFT
7	1		36106	CD-A177	WASHER, 1 7/8" OD, 41/64 ID.
6	1		48335		" 1" OD, 5/8 ID
5	2		36107		GEAR, MITER 12P. ZOPA, ZIT 5/8"
4	1		31140	CD-A264	BRKT, SPEED CONTROL
3	1		31116		SET COLLAR, 5/8 ID, 1.55CR
2	1		31103	CD-A274	STUB, SPEED CONTROL
1	1		20156	26155	BRKT, ADJ. SPEED CONTROL

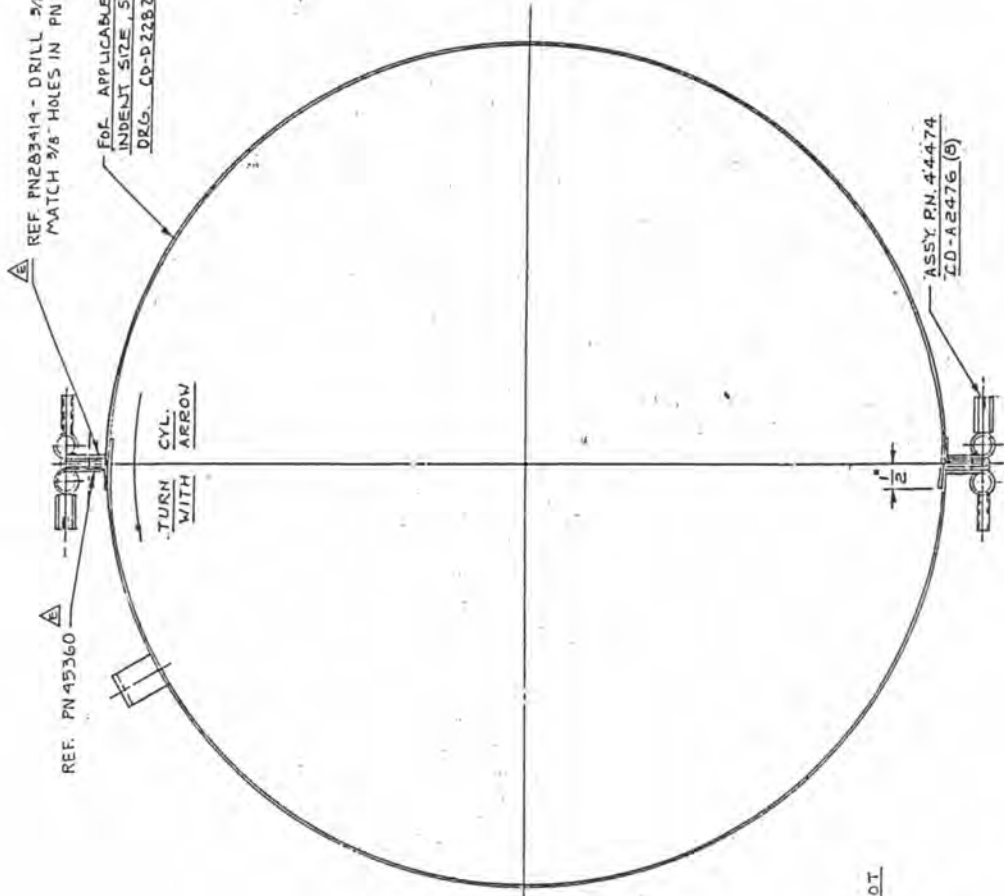
Carter-Day Company
 500 73rd Ave. N.E., Minneapolis, MN 55432
 ASS'Y, OPTIONAL REMOTE SPEED CONTROL
 C.C. # 3 41.F

PART NO.

INDENT SIZE	STANDARD	NICKEL PLATE
#2 CARTER	47600	
#3 CARTER	45269	
#5 SUPERIOR	47681	
#1 CARTER	4370	412002
#6 SUPERIOR	410700	
#5 CARTER	47682	
#3 CARTER	44482	
#2 CARTER	44483	47893
#10 SUPERIOR	410935	
#11 CARTER	44484	47545
#12 SUPERIOR	44485	
#13 CARTER	44486	47225
#14 SUPERIOR	44487	
#5-3 CARTER	44500	
#16 SUPERIOR	44488	
#18 SUPERIOR	44489	
#9 SUPERIOR	41707	
#19 CARTER	44490	412693
#20 SUPERIOR	44491	
#23 SUPERIOR	44492	
#22 CARTER	44493	412694
#24 CARTER	44494	
#26 CARTER	44495	
#16 SUPERIOR	44496	
#28 CARTER	44497	
#30 SUPERIOR	44498	
#32 CARTER	44499	
#36 SUPERIOR	44502	
#44 SUPERIOR	44503	
#60 SUPERIOR	44504	
#5-32 CARTER	44501	

REVISIONS

NO	BY	DATE	REMARKS
M	A	JC	7-17-90 THIS DRAWING REPLACES CO-B3309
	B	JC	8-8-90 ADDED NOTE: THESE SHELLS ARE NOT TO BE HARDENED
M	C	X	11-15-90 ADDED P/M 412009
M	D	WJA	6-1-94 DEL PIN'S 47809 & 47810, ADD 417707 ECO 94-242
M	E	RAG	1-3-95 ADDED LABELS ECO 94-443



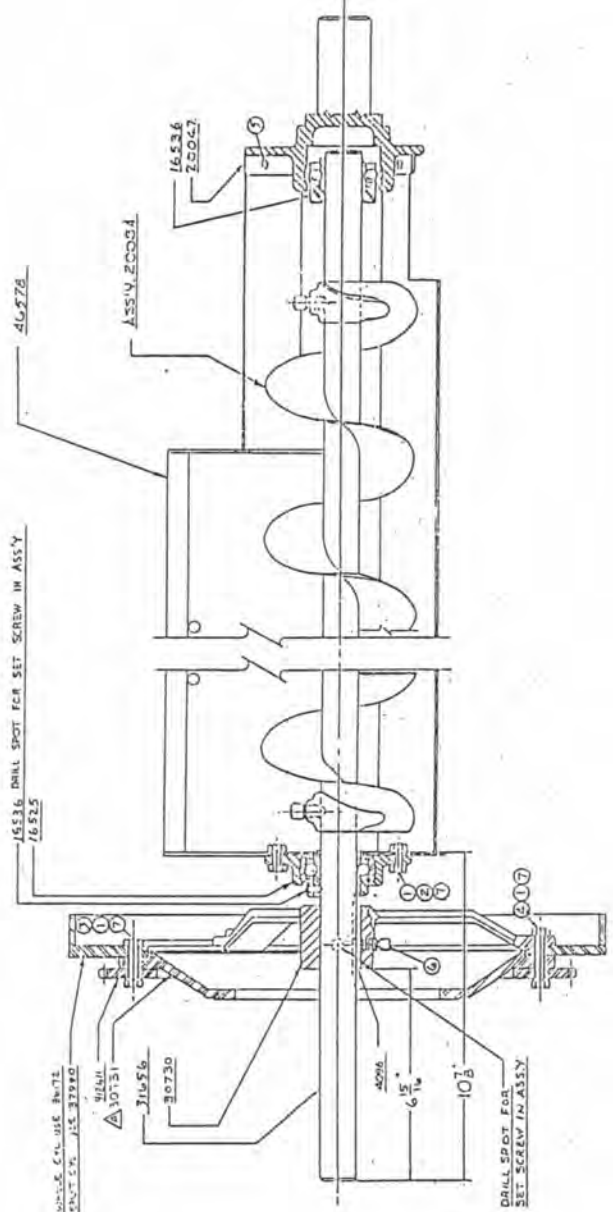
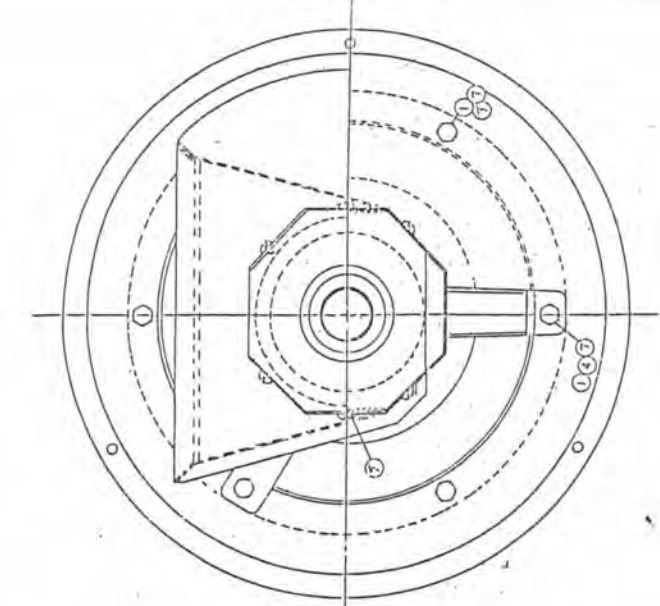
NOTE: ±.001 CONCENTRICITY ALLOWED MAXIMUM

* NOTE: THESE SHELLS ARE NOT TO BE HARDENED *

ITEM	QTY. RECD.	PART NO.	DRAWING	DESCRIPTION
				CARTER DAY
				ASSY, SPLIT CYLINDER QUICK CHANGE

TOLERANCES UNLESS SPECIFIED	
DECIMAL .XXX	±.010
XX	±.00

DATE NO.



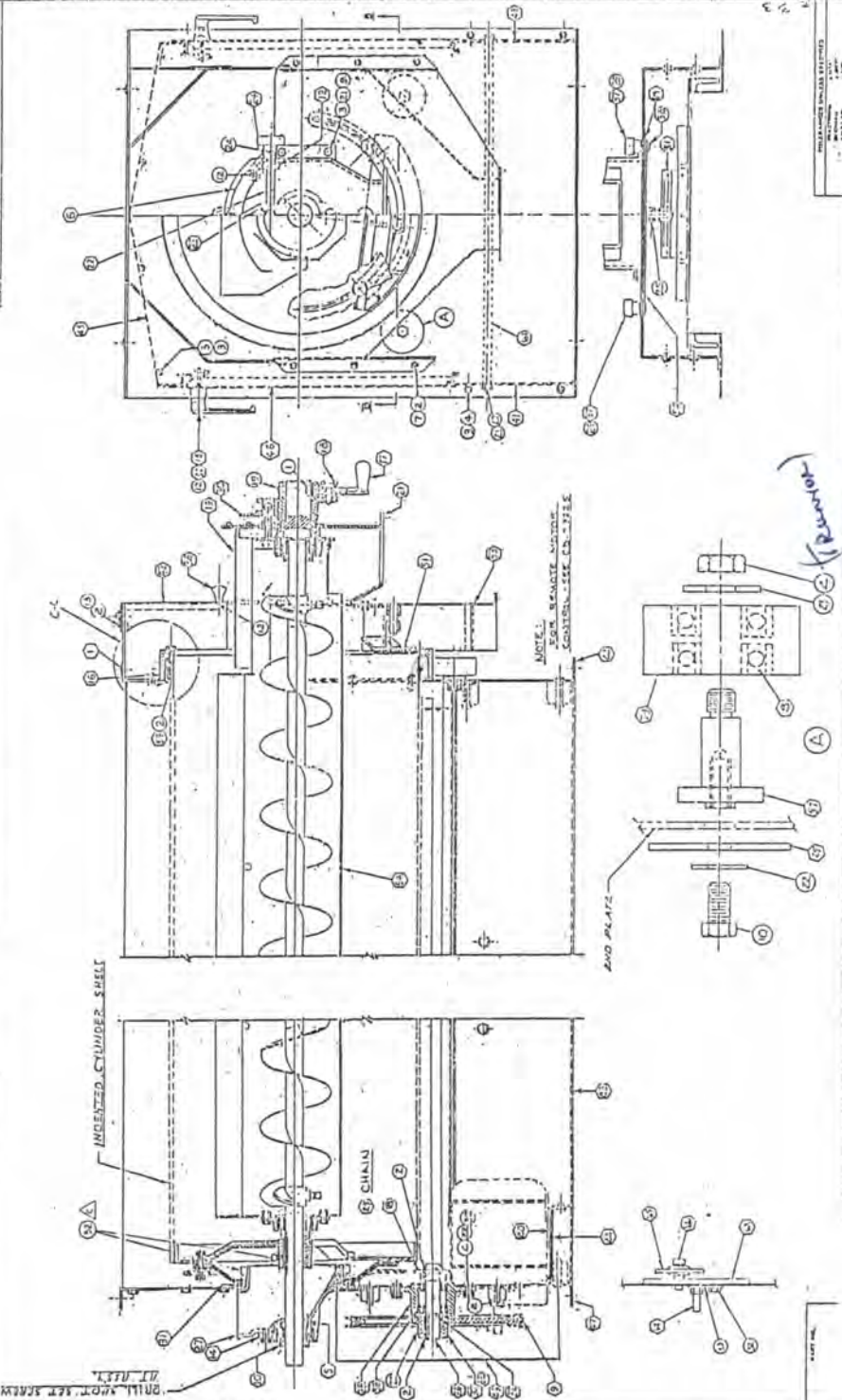
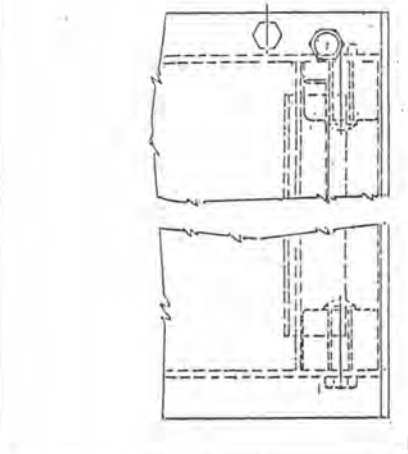
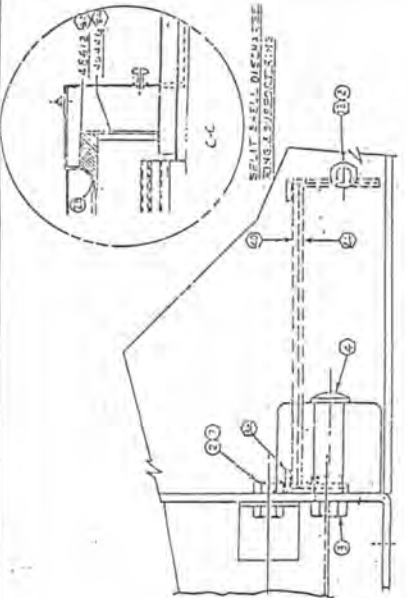
QTY	DESCRIPTION	UNIT
1	1.0000 IN. DIA. X 1.0000 IN. L. S.S. KEY	1.0
2	1.5000 IN. DIA. X .7500 IN. L. S.S. KEY	2.0
3	1.0000 IN. DIA. X .7500 IN. L. S.S. KEY	3.0
4	1.0000 IN. DIA. X .7500 IN. L. S.S. KEY	4.0
5	1.0000 IN. DIA. X .7500 IN. L. S.S. KEY	5.0
6	1.0000 IN. DIA. X .7500 IN. L. S.S. KEY	6.0
7	1.0000 IN. DIA. X .7500 IN. L. S.S. KEY	7.0

ITEM	QTY	PART NO.	DESCRIPTION
1	1	16536	78225
2	1	16536	78225
3	1	16536	78225
4	1	16536	78225
5	1	16536	78225
6	1	16536	78225
7	1	16536	78225

Carter-Day Company
 16536 78225
 ASSY, CYLINDER SHAFT THROUGH 60.0F
 DATE: 10/1/53
 DRAWN BY: J.E. HARRIS
 CHECKED BY: J.E. HARRIS
 APPROVED BY: J.E. HARRIS
 PART NO. 16536 78225
 DO NOT SCALE DRAWING
 SCALE: 1" = 1"

PART NO.

- FASTENERS
- 1. KELCO WOODRUFF NO. 13
 - 2. NUT, 1/4" DIA., 1/2" L.
 - 3. WASHER, 1/4" DIA., 1/2" L.
 - 4. WASHER, 1/4" DIA., 1/2" L.
 - 5. WASHER, 1/4" DIA., 1/2" L.
 - 6. WASHER, 1/4" DIA., 1/2" L.
 - 7. WASHER, 1/4" DIA., 1/2" L.
 - 8. WASHER, 1/4" DIA., 1/2" L.
 - 9. WASHER, 1/4" DIA., 1/2" L.
 - 10. WASHER, 1/4" DIA., 1/2" L.
 - 11. WASHER, 1/4" DIA., 1/2" L.
 - 12. WASHER, 1/4" DIA., 1/2" L.
 - 13. WASHER, 1/4" DIA., 1/2" L.
 - 14. WASHER, 1/4" DIA., 1/2" L.
 - 15. WASHER, 1/4" DIA., 1/2" L.
 - 16. WASHER, 1/4" DIA., 1/2" L.
 - 17. WASHER, 1/4" DIA., 1/2" L.
 - 18. WASHER, 1/4" DIA., 1/2" L.
 - 19. WASHER, 1/4" DIA., 1/2" L.
 - 20. WASHER, 1/4" DIA., 1/2" L.
 - 21. WASHER, 1/4" DIA., 1/2" L.
 - 22. WASHER, 1/4" DIA., 1/2" L.
 - 23. WASHER, 1/4" DIA., 1/2" L.
 - 24. WASHER, 1/4" DIA., 1/2" L.
 - 25. WASHER, 1/4" DIA., 1/2" L.
 - 26. WASHER, 1/4" DIA., 1/2" L.
 - 27. WASHER, 1/4" DIA., 1/2" L.
 - 28. WASHER, 1/4" DIA., 1/2" L.
 - 29. WASHER, 1/4" DIA., 1/2" L.
 - 30. WASHER, 1/4" DIA., 1/2" L.
 - 31. WASHER, 1/4" DIA., 1/2" L.
 - 32. WASHER, 1/4" DIA., 1/2" L.
 - 33. WASHER, 1/4" DIA., 1/2" L.



NO.	QTY.	DESCRIPTION	REMARKS
1	1	SHAFT	
2	1	FLANGE	
3	1	ROTOR	
4	1	SEAL	
5	1	WASHER	
6	1	NUT	
7	1	WASHER	
8	1	WASHER	
9	1	WASHER	
10	1	WASHER	
11	1	WASHER	
12	1	WASHER	
13	1	WASHER	
14	1	WASHER	
15	1	WASHER	
16	1	WASHER	
17	1	WASHER	
18	1	WASHER	
19	1	WASHER	
20	1	WASHER	
21	1	WASHER	
22	1	WASHER	
23	1	WASHER	
24	1	WASHER	
25	1	WASHER	
26	1	WASHER	
27	1	WASHER	
28	1	WASHER	
29	1	WASHER	
30	1	WASHER	
31	1	WASHER	
32	1	WASHER	
33	1	WASHER	

Cartier-Day Company
 ASS'Y GENERAL
 G.O. UNI-FLOW
 C.D. 2593

CARTER DAY INTERNATIONAL
DATE 1/09/95

SINGLE LEVEL BILL WITH BLOW-THRU

PARENT ITEM NO.
49620

DESCRIPTION STYCZG2 UNIFLOW #3 CH DR
ENGR DRAW

COMPONENT
ITEM NO.

DESCRIPTION

ENGINEERING
DRAWING NUMBER

QUANTITY
PER

04096	KEY SQUARE 1/4X1/4 X2	CM21225	REVO	1
06736	KEY SQUARE 1/4X1/4 X1.5	CM21225	REVO	2
09125	CONN BOLT 5/16-18X2.0	HC-23794	REV	20
10639	KEY SQUARE 1/4X1/4 X1.25	CM21225	REVO	1
10822	WASHER FELT 1.187ID X2.0 X.25	HC-23777		2
10876	PLATE INDICATOR	23791		1
10894	CONN BOLT 5/16-18X2.25	HC-23794	REV	3
10895	CONN BOLT 5/16-18X3.25	HC-23794	REV	3
14807	BRG BALL .669B 203KLL2	FAFNIR		4
15624	V-BELT #A-46			1
16231	CONN BOLT 1/4-20X1.5	HC-25240	REV	4
16525	HOUSING BRG 2.4409 ID SPH	HC34385	REVO	1
16536	BRG BALL 1.187B YAR206-103 OR	YEL206-103	PP	3
17061	CONN BOLT 1/4-20X1.375	HC-25240	REV	2
17521	HOUSING BRG 2.4409 ID SPH	HC-34651	REV	1
18468	CRANK CONV TROUGH	HC-34902	REV	1
18469	THUMB-SCR SPDH 3/8-16 X1.25	HC 25782		1
20042	COVER DISCH END	HC-35507	REVO	1
20047	HOUSING BRG 2.4409IN ID SPH	HC-35512	HC310	1
20055	POINTER 1-3/4 IN B	HC-35520	HC310	1
20062	SPOUT LIFTING DISCH	HC-42910	HC310	1
20081	BAR RETARDER PIVOT	HC 26125	HC309	1
20084	FLIGHTING CNVR LH 5X5P X90.5	1.25ID	HC-3357	1
20087	PIN POINTER CONTROL 3/4 D	HC-26137	REVO	1
20089	TRUNNION W/O BRG URETHANE	HC-26139	REVO	2
28105.0	BSHG H SPLIT TAPER .9375 B	TYPE 1		1
281721	SHEAVE A12.0/B12.4 PD X1 #H	BROWNING	BK130	1
30210	CAP PLSTC 3IN #EC-48	CAPLUG		1
30730	HUB RECEIVING HEAD 1-3/16 B	CD-C182	REV	1
30731	HEAD CYL RECEIVING URETHANE	7.0ID	CD-C183	1
31092	HOUSING BRG 2.0478 IN ID CYL	CD-B290	REVO	1
31143	SPRING RETARDER	CD-A285		2
31145	PIN RETARDER	CD-A286		1
31146	BOLT SHOULDER	CD-A287	REVO	1
31148	BAR RETARDER CONTROL	CD-B300	REV	1
31614	WASHER FELT 6.87ID X8.25 X.25	CD-A398		1
31630	DECAL TRADEMARK UNI-FLOW	HART UNIFLO	CY	2
31656	SHAFT CYL CNVR 1-3/16D X106.5	CD-B428	REV	1
31673	RING RTNG #5100-93 TRUARC			1
31947	SPOUT ADPTR TAILING DISCH	CD-B510	REVO	1
35209	HANDLE CRM # L SERIES 909	REF CD-A406		4
35210	CAM LOCKING C-14 AUSTIN ZP	REF CD-A406		4
35263	DECAL CAUTION ROTATING MACH	CD-A1227		1
35369	HOPPER TAILINGS	CD-D684	REV1	1
36033	ANGLE MOTOR SUPPORT	CD-B1669	REVO	1
36070	SPRKT IDLER 50I15 .6358	36070A-00	REVO	1
36480	NAMEPLATE UNI-FLO CYLINDER SEP	CD-A1480		1
37780	LABEL WARNING MOVING PARTS	CD-A1616		1

CARTER DAY INTERNATIONAL
DATE 1/09/95

SINGLE LEVEL BILL WITH BLOW-THRU

PARENT ITEM NO.
49620

DESCRIPTION STYCZG2 UNIFLOW #3 CH DR
ENGR DRAW

COMPONENT ITEM NO.	DESCRIPTION	ENGINEERING DRAWING NUMBER	REVISION	QUANTITY PER
38126	SHAFT COUNTER 1-1/16D X6.125	CD-A272	REVO	1
410194	COVER INSPECTION #3UF LC	CD-C3531	REV	1
410195	PLATE DISCH END #3UF LC	CD-D2964	REV	1
410597	BRG ROD END .4375B CTMD-7	MORSE		1
410618	KNOB ADJUSTING	CD-A2829	REVO	1
410619	ROD CONTROL 1/2-13NC X6.75	CD-A2830	REVO	1
411540	PLATE MOTOR SPRT #3UF QO	CD-B4227	REV	1
412607	SPRKT 50BS17HT 1.0625B 2 SSCR		PP	1
412609	BOLT TENSIONER HANDLE #3UF	CD-B4525	REVO	1
412610	BAR TENSIONER CHAIN #3UF	CD-B4526	REVO	1
412611	SPRKT SHELL 50A76 11.75B	CD-C3963	REV	1
413994	V-RING 6.02ID FORSHEDA V-170A			1
414212	NAMEPLATE TRADEMARK CARTER DAY	2.88X16.12	PP	2
41630	WASHER 3.0 X.3438 X18GA	CD-A2116	REV	1
41668	KNOB PLSTC DAVIES 3003-S 10-24	HC 25972	REVO	1
43861	DECAL ARROW RED	CD-A2399	REVO	1
45272	KNOB PLSTC #292 5/16-18 INSERT	DIMCD-GRAY		2
46566	PLATE LOWER SIDE LH #3UF LC	CD-B3489	REV	1
46568	PLATE LOWER SIDE RH #3UF LC	CD-B3491	REV	1
46570	PLATE TOP #3UF LC	CD-B3493	REVO	1
46571	PLATE SIDE	CD-C3009	REVO	2
46572	PLATE FEED END #3UF LC	CD-D2357	REV	1
46577	GUARD BELT	CD-C3010	REV-	1
46578	TROUGH CNVR #3UF LC	CD-D2359	REVO	1
47746	ROD CYL SUPPORT #3UF LC	CD-A2669	REVO	3
47879	PLUG HOLE DP-562 .562 DIA		PP	4
48268	ANGLE SUPPORT	CD-A2719	REVO	1
48269	RETARDER	CD-B3875	REVO	1
48744	WASHER 2.5 X.4062 X.125	CD-A2765	REVO	2
48745	STUD ROLLER 1-1/2D	CD-A2764	REV	2
60527	SPOUT ADPTR LIFTING DISCH	SC-3054	CD-16	1
60624	LABEL WARNING	SC-2115	S-45	2
61415	BRG BALL .984B 6205-2RS	SKF	S-239	2
63552	CHAIN ROLLER #50 .625P RVTD	ANSI STD		86
72252	SET COLLAR STL .5ID			1
88144	SCR DRIVE RH #4 X.3125 ZP	TYPE U		4
88178	CAP SCR G2 HH 1/4-20X.5 ZP			6
88181	CAP SCR G2 HH 1/4-20X1 ZP			2
88190	CAP SCR G2 HH 5/16-18X.75 ZP			3
88191	CAP SCR G2 HH 5/16-18X.875 ZP			40
88192	CAP SCR G2 HH 5/16-18X1 ZP			3
88193	CAP SCR G2 HH 5/16-18X1.25 ZP			3
88201	CAP SCR G2 HH 3/8-16X1 ZP			2
88217	CAP SCR G2 HH 1/2-13X.75 ZP			1
88224	CAP SCR G2 HH 1/2-13X2.25 ZP			2
88249	NUT HEX G2 FULL 1/4-20 ZP			31
88251	NUT HEX G2 FULL 5/16-18 ZP			59
88252	NUT HEX G2 FULL 3/8-16 ZP			8

CARTER DAY INTERNATIONAL
DATE 1/09/95

SINGLE LEVEL BILL WITH BLOW-THRU

PARENT ITEM NO.
49620

DESCRIPTION STYCZG2 UNIFLOW #3 CH DR
ENGR DRAW

COMPONENT ITEM NO.	DESCRIPTION	ENGINEERING DRAWING NUMBER	QUANTITY PER
88254	NUT HEX G2 FULL 1/2-13 ZP		4.
88263	NUT HEX STD JAM 7/16-20 ZP		1.
88264	NUT HEX STD JAM 1/2-13 ZP		2.
88297	SET-SCR SOC #10-24X.375	NYLOC/EQV	2.
88299	SET-SCR SOC 1/4-20X.25	NYLOC/EQV	3.
88305	SET-SCR SOC 5/16-18X.5	NYLOC/EQV	2.
88306	SET-SCR SOC 5/16-18X.375	NYLOC/EQV	4.
88311	SET-SCR SOC 3/8-16X.5	NYLOC/EQV	1.
88328	SET-SCR SOC 3/8-16X.375	NYL P-KNURL C	1.
88330	SET-SCR SQH 3/8-16X.625	CUP POINT	2.
88331	SET-SCR SQH 3/8-16X.625	NYLOCK	2.
88360	WASHER STL FLAT 5/16 ZP		6.
88362	WASHER STL FLAT 1/2 ZP		2.
88366	WASHER SPRG LOCK 1/4 MED ZP		6.
88372	WASHER SPRG LOCK 1/2 MED ZP		4.
88380	KEY 608 STD WOODRUFF #13		1.
88398	MACH-SCR STL RH #8-32X.375 ZP		8.
88409	MACH-SCR STL RH 1/4-20X.375 ZP		28.
88473	WASHER SPRG LOCK 5/16 MED ZP		7.
88546	NUT HEX G2 FULL 5/16-18 ZP	NYL INS	3.
88646	WASHER SPRG LOCK 3/8 MED ZP		8.
88967	SHLDR-SCR SOC 5/8 X1.25		1.
89103	SCR DRIVE RH #4 X.187 TYP U		4.
90890	LINK CONN RC #50		2.
91009	CAP SCR G2 HH 1/4-20X2.25 ZP		3.
91133	PIN COTTER 3/32X1 ZP		2.
92086	PAINT C-D MET BLUE CER IC5057	CERAMIC IND CT	1.5
98673	MANUAL INSTR		1.0

CARTER DAY INTERNATIONAL
DATE 1/09/95

SINGLE LEVEL BILL WITH BLOW-THRU

PARENT ITEM NO. 49621 DESCRIPTION STYCZH2 UNIFLOW #3 CH DR 2HI ENGR DRAW

COMPONENT ITEM NO.	DESCRIPTION	ENGINEERING DRAWING NUMBER	REVISION	QUANTITY PER
04096	KEY SQUARE 1/4X1/4 X2	CM21225	REVO	2.
06736	KEY SQUARE 1/4X1/4 X1.5	CM21225	REVO	4.
09125	CONN BOLT 5/16-18X2.0	HC-23794	REV	40.
10639	KEY SQUARE 1/4X1/4 X1.25	CM21225	REVO	2.
10822	WASHER FELT 1.187 ID X2.0 X.25	HC-23777		4.
10876	PLATE INDICATOR	23791		2.
10894	CONN BOLT 5/16-18X2.25	HC-23794	REV	6.
10895	CONN BOLT 5/16-18X3.25	HC-23794	REV	6.
14807	BRG BALL .6698 203KLL2	FAFNIR		8.
15624	V-BELT #A-46			2.
16231	CONN BOLT 1/4-20X1.5	HC-25240	REV	8.
16525	HOUSING BRG 2.4409 ID SPH	HC34385	REVO	2.
16536	BRG BALL 1.187B YAR206-103 OR	YEL206-103	PP	6.
17061	CONN BOLT 1/4-20X1.375	HC-25240	REV	4.
17521	HOUSING BRG 2.4409 ID SPH	HC-34651	REV	2.
18468	CRANK CONV TROUGH	HC-34902	REV	2.
18469	THUMB-SCR SPDH 3/8-16 X1.25	HC 25782		2.
20042	COVER DISCH END	HC-35507	REVO	2.
20047	HOUSING BRG 2.4409IN ID SPH	HC-35512	HC310	2.
20055	POINTER 1-3/4 IN B	HC-35520	HC310	2.
20062	SPOUT LIFTING DISCH	HC-42910	HC310	2.
20081	BAR RETARDER PIVOT	HC 26125	HC309	2.
20084	FLIGHTING CNVR LH 5X5P X90.5	1.25 ID	HC-3357	2.
20087	PIN POINTER CONTROL 3/4 D	HC-26137	REVO	2.
20089	TRUNNION W/O BRG URETHANE	HC-26139	REVO	4.
281050	BSHG H SPLIT TAPER .9375 B	TYPE 1		2.
281721	SHEAVE A12.0/B12.4 PD X1 #H	BROWNING	BK130	2.
30210	CAP PLSTC 3IN #EC-48	CAPLUG		2.
30730	HUB RECEIVING HEAD 1-3/16 B	CD-C182	REV	2.
30731	HEAD CYL RECEIVING URETHANE	7.0ID	CD-C183	2.
31092	HOUSING BRG 2.0478 IN ID CYL	CD-B290	REVO	2.
31143	SPRING RETARDER	CD-A285		4.
31145	PIN RETARDER	CD-A286		2.
31146	BOLT SHOULDER	CD-A287	REVO	2.
31148	BAR RETARDER CONTROL	CD-B300	REV	2.
31614	WASHER FELT 6.87ID X8.25 X.25	CD-A398		2.
31630	DECAL TRADEMARK UNI-FLOW	HART UNIFLO	CY	4.
31656	SHAFT CYL CNVR 1-3/16D X106.5	CD-B428	REV	2.
31673	RING RTNG #5100-93 TRUARC			2.
35209	HANDLE CRM # L SERIES 909	REF	CD-A406	8.
35210	CAM LOCKING C-14 AUSTIN ZP	REF	CD-A406	8.
35263	DECAL CAUTION ROTATING MACH	CD-A1227		2.
35369	HOPPER TAILINGS	CD-D684	REV1	2.
36033	ANGLE MOTOR SUPPORT	CD-B1669	REVO	2.
36070	SPRKT IDLER 50I15 .6358	36070A-00	REVO	2.
36480	NAMEPLATE UNI-FLO CYLINDER SEP	CD-A1480		2.
37780	LABEL WARNING MOVING PARTS	CD-A1616		2.
38126	SHAFT COUNTER 1-1/16D X6.125	CD-A272	REVO	2.

CARTER DAY INTERNATIONAL
DATE 1/09/95

SINGLE LEVEL BILL WITH BLOW-THRU

PARENT ITEM NO.
49621

DESCRIPTION STYCZH2 UNIFLOW #3 CH DR 2HI
ENGR DRAW

COMPONENT ITEM NO.	DESCRIPTION	ENGINEERING DRAWING NUMBER	QUANTITY PER
410194	COVER INSPECTION #3UF LC	CD-C3531 REV	2.
410195	PLATE DISCH END #3UF LC	CD-D2964 REV	2.
410597	BRG ROD END .4375B CTMD-7	MORSE	2.
410618	KNOB ADJUSTING	CD-A2829 REV0	2.
410619	ROD CONTROL 1/2-13NC X6.75	CD-A2830 REV0	2.
411540	PLATE MOTOR SPRT #3UF 90	CD-B4227 REV	2.
412607	SPRKT 50BS17HT 1.0625B 2 SSCR	PP	2.
412609	BOLT TENSIONER HANDLE #3UF	CD-B4525 REV0	2.
412610	BAR TENSIONER CHAIN #3UF	CD-B4526 REV0	2.
412611	SPRKT SHELL 50A76 11.75B	CD-C3963 REV	2.
413994	V-RING 6.02ID FORSHEDA V-170A		2.
414212	NAMEPLATE TRADEMARK CARTER DAY	2.88X16.12 PP	2.
41630	WASHER 3.0 X.3438 X18GA	CD-A2116 REV	2.
41668	KNOB PLSTC DAVIES 3003-S 10-24	HC 25972 REV0	2.
43861	DECAL ARROW RED	CD-A2399 REV0	2.
45272	KNOB PLSTC #292 5/16-18 INSERT	DIMCO-GRAY	4.
46566	PLATE LOWER SIDE LH #3UF LC	CD-B3489 REV	2.
46568	PLATE LOWER SIDE RH #3UF LC	CD-B3491 REV	2.
46570	PLATE TOP #3UF LC	CD-B3493 REV0	2.
46571	PLATE SIDE	CD-C3009 REV0	4.
46572	PLATE FEED END #3UF LC	CD-D2357 REV	2.
46577	GUARD BELT	CD-C3010 REV-	2.
46578	TROUGH CNVR #3UF LC	CD-D2359 REV0	2.
47746	ROD CYL SUPPORT #3UF LC	CD-A2669 REV0	6.
47879	PLUG HOLE DP-562 .562 DIA	PP	8.
48268	ANGLE SUPPORT	CD-A2719 REV0	2.
48269	RETARDER	CD-B3875 REV0	2.
48744	WASHER 2.5 X.4062 X.125	CD-A2765 REV0	4.
48745	STUD ROLLER 1-1/2D	CD-A2764 REV	4.
60624	LABEL WARNING	SC-2115 S-45	4.
61415	BRG BALL .984B 6205-2RS	SKF S-239	4.
63552	CHAIN ROLLER #50 .625P RVTD	ANSI STD	172.
72252	SET COLLAR STL .5ID		2.
88144	SCR DRIVE RH #4 X.3125 ZP	TYPE U	8.
88178	CAP SCR G2 HH 1/4-20X.5 ZP		12.
88181	CAP SCR G2 HH 1/4-20X1 ZP		4.
88190	CAP SCR G2 HH 5/16-18X.75 ZP		6.
88191	CAP SCR G2 HH 5/16-18X.875 ZP		80.
88192	CAP SCR G2 HH 5/16-18X1 ZP		6.
88193	CAP SCR G2 HH 5/16-18X1.25 ZP		6.
88201	CAP SCR G2 HH 3/8-16X1 ZP		4.
88217	CAP SCR G2 HH 1/2-13X.75 ZP		2.
88224	CAP SCR G2 HH 1/2-13X2.25 ZP		4.
88249	NUT HEX G2 FULL 1/4-20 ZP		62.
88251	NUT HEX G2 FULL 5/16-18 ZP		118.
88252	NUT HEX G2 FULL 3/8-16 ZP		16.
88254	NUT HEX G2 FULL 1/2-13 ZP		8.
88263	NUT HEX STD JAM 7/16-20 ZP		2.

CARTER DAY INTERNATIONAL
DATE 1/09/95

SINGLE LEVEL BILL WITH BLOW-THRU

PARENT ITEM NO.
49621

DESCRIPTION STYCZH2 UNIFLOW #3 CH DR 2HI
ENGR DRAW

COMPONENT
ITEM NO.

DESCRIPTION

ENGINEERING
DRAWING NUMBER

QUANTITY
PER

88264	NUT HEX STD JAM 1/2-13 ZP		4.
88297	SET-SCR SOC #10-24X.375	NYLOC/EQV	4.
88299	SET-SCR SOC 1/4-20X.25	NYLOC/EQV	6.
88305	SET-SCR SOC 5/16-18X.5	NYLOC/EQV	4.
88306	SET-SCR SOC 5/16-18X.375	NYLOC/EQV	8.
88311	SET-SCR SOC 3/8-16X.5	NYLOC/EQV	2.
88328	SET-SCR SOC 3/8-16X.375	NYL P-KNURL C	2.
88330	SET-SCR SQH 3/8-16X.625	CUP POINT	4.
88331	SET-SCR SQH 3/8-16X.625	NYLOCK	4.
88360	WASHER STL FLAT 5/16 ZP		12.
88362	WASHER STL FLAT 1/2 ZP		4.
88366	WASHER SPRG LOCK 1/4 MED ZP		12.
88372	WASHER SPRG LOCK 1/2 MED ZP		8.
88380	KEY 608 STD WOODRUFF #13		2.
88398	MACH-SCR STL RH #8-32X.375 ZP		16.
88409	MACH-SCR STL RH 1/4-20X.375 ZP		56.
88473	WASHER SPRG LOCK 5/16 MED ZP		14.
88546	NUT HEX G2 FULL 5/16-18 ZP	NYL INS	6.
88646	WASHER SPRG LOCK 3/8 MED ZP		16.
88967	SHLDR-SCR SOC 5/8 X1.25		2.
89103	SCR DRIVE RH #4 X.187 TYP U		8.
90890	LINK CONN RC #50		4.
91009	CAP SCR G2 HH 1/4-20X2.25 ZP		6.
91133	PIN COTTER 3/32X1 ZP		4.
92086	PAINT C-D MET BLUE CER IC5057	CERAMIC IND CT	3.
98673	MANUAL INSTR		1.

PARENT ITEM NO. 49622 DESCRIPTION STYCZJ2 UNIFLOW #3 CH DR 3HI ENGR DRAW

COMPONENT ITEM NO.	DESCRIPTION	ENGINEERING DRAWING NUMBER	REVISION	QUANTITY PER
04096	KEY SQUARE 1/4X1/4 X2	CM21225	REV0	3.
06736	KEY SQUARE 1/4X1/4 X1.5	CM21225	REV0	6.
09125	CONN BOLT 5/16-18X2.0	HC-23794	REV	60.
10639	KEY SQUARE 1/4X1/4 X1.25	CM21225	REV0	3.
10822	WASHER FELT 1.187ID X2.0 X.25	HC-23777		6.
10876	PLATE INDICATOR	23791		3.
10894	CONN BOLT 5/16-18X2.25	HC-23794	REV	9.
10895	CONN BOLT 5/16-18X3.25	HC-23794	REV	9.
14807	BRG BALL .669B 203KLL2	FAFNIR		12.
15624	V-BELT #A-46			3.
16231	CONN BOLT 1/4-20X1.5	HC-25240	REV	12.
16525	HOUSING BRG 2.4409 ID SPH	HC34385	REV0	3.
16536	BRG BALL 1.187B YAR206-103 CR	YEL206-103	PP	9.
17061	CONN BOLT 1/4-20X1.375	HC-25240	REV	6.
17521	HOUSING BRG 2.4409 ID SPH	HC-34651	REV	3.
18468	CRANK CONV TROUGH	HC-34902	REV	3.
18469	THUMB-SCR SPDH 3/8-16 X1.25	HC 25782		3.
20042	COVER DISCH END	HC-35507	REV0	3.
20047	HOUSING BRG 2.4409IN ID SPH	HC-35512	HC310	3.
20055	POINTER 1-3/4 IN B	HC-35520	HC310	3.
20062	SPOUT LIFTING DISCH	HC-42910	HC310	3.
20081	BAR RETARDER PIVOT	HC 26125	HC309	3.
20084	FLIGHTING CNVR LH 5X5P X90.5	1.25ID	HC-3357	3.
20087	PIN POINTER CONTROL 3/4 D	HC-26137	REV0	3.
20089	TRUNNION W/O BRG URETHANE	HC-26139	REV0	6.
281050	BSHG H SPLIT TAPER .9375 B	TYPE 1		3.
281721	SHEAVE A12.0/B12.4 PD X1 #H	BROWNING	BK130	3.
30210	CAP PLSTC 3IN #EC-48	CAPLUG		3.
30730	HUB RECEIVING HEAD 1-3/16 B	CD-C182	REV	3.
30731	HEAD CYL RECEIVING URETHANE	7.0ID	CD-C183	3.
31092	HOUSING BRG 2.0478 IN ID CYL	CD-B290	REV0	3.
31143	SPRING RETARDER	CD-A285		6.
31145	PIN RETARDER	CD-A286		3.
31146	BOLT SHOULDER	CD-A287	REV0	3.
31148	BAR RETARDER CONTROL	CD-B300	REV	3.
31614	WASHER FELT 6.87ID X8.25 X.25	CD-A398		3.
31630	DECAL TRADEMARK UNI-FLOW	HART UNIFLO	CY	6.
31656	SHAFT CYL CNVR 1-3/16D X106.5	CD-B428	REV	3.
31673	RING RTNG #5100-93 TRUARC			3.
35209	HANDLE CRM # L SERIES 909	REF CD-A406		12.
35210	CAM LOCKING C-14 AUSTIN ZP	REF CD-A406		12.
35263	DECAL CAUTION ROTATING MACH	CD-A1227		3.
35369	HOPPER TAILINGS	CD-D684	REV1	3.
36033	ANGLE MOTOR SUPPORT	CD-B1669	REV0	3.
36070	SPRKT IDLER 50I15 .6358	36070A-00	REV0	3.
36480	NAMEPLATE UNI-FLO CYLINDER SEP	CD-A1480		3.
37780	LABEL WARNING MOVING PARTS	CD-A1616		3.
38126	SHAFT COUNTER 1-1/16D X6.125	CD-A272	REV0	3.

CARTER DAY INTERNATIONAL
DATE 1/09/95

SINGLE LEVEL BILL WITH BLOW-THRU

PARENT ITEM NO.
49622

DESCRIPTION STYCZJ2 UNIFLOW #3 CH DR 3HI
ENGR DRAW

COMPONENT ITEM NO.	DESCRIPTION	ENGINEERING DRAWING NUMBER	QUANTITY PER
410194	COVER INSPECTION #3UF LC	CD-C3531 REV	3
410195	PLATE DISCH END #3UF LC	CD-D2964 REV	3
410597	BRG ROD END .4375B CTMD-7	MORSE	3
410618	KNOB ADJUSTING	CD-A2829 REV0	3
410619	ROD CONTROL 1/2-13NC X6.75	CD-A2830 REV0	3
411540	PLATE MOTOR SPRT #3UF Q0	CD-B4227 REV	3
412607	SPRKT 50BS17HT 1.0625B 2 SSCR	PP	3
412609	BOLT TENSIONER HANDLE #3UF	CD-B4525 REV0	3
412610	BAR TENSIONER CHAIN #3UF	CD-B4526 REV0	3
412611	SPRKT SHELL 50A76 11.75B	CD-C3963 REV	3
413994	V-RING 6.02ID FORSHEDA V-170A		3
414212	NAMEPLATE TRADEMARK CARTER DAY	2.88X16.12 PP	2
41630	WASHER 3.0 X.3438 X18GA	CD-A2116 REV	3
41668	KNOB PLSTC DAVIES 3003-S 10-24	HC 25972 REV0	3
43861	DECAL ARROW RED	CD-A2399 REV0	3
45272	KNOB PLSTC #292 5/16-18 INSERT	DIMCO-GRAY	6
46566	PLATE LOWER SIDE LH #3UF LC	CD-B3489 REV	3
46568	PLATE LOWER SIDE RH #3UF LC	CD-B3491 REV	3
46570	PLATE TOP #3UF LC	CD-B3493 REV0	3
46571	PLATE SIDE	CD-C3009 REV0	6
46572	PLATE FEED END #3UF LC	CD-D2357 REV	3
46577	GUARD BELT	CD-C3010 REV-	3
46578	TROUGH CNVR #3UF LC	CD-D2359 REV0	3
47746	ROD CYL SUPPORT #3UF LC	CD-A2669 REV0	9
47879	PLUG HOLE DP-562 .562 DIA	PP	12
48268	ANGLE SUPPORT	CD-A2719 REV0	3
48269	RETARDER	CD-B3875 REV0	3
48744	WASHER 2.5 X.4062 X.125	CD-A2765 REV0	6
48745	STUD ROLLER 1-1/2D	CD-A2764 REV	6
60624	LABEL WARNING	SC-2115 S-45	6
61415	BRG BALL .984B 6205-2RS	SKF S-239	6
63552	CHAIN ROLLER #50 .625P RVID	ANSI STD	258
72252	SET COLLAR STL .5ID		3
88144	SCR DRIVE RH #4 X.3125 ZP	TYPE U	12
88178	CAP SCR G2 HH 1/4-20X.5 ZP		18
88181	CAP SCR G2 HH 1/4-20X1 ZP		6
88190	CAP SCR G2 HH 5/16-18X.75 ZP		9
88191	CAP SCR G2 HH 5/16-18X.875 ZP		120
88192	CAP SCR G2 HH 5/16-18X1 ZP		9
88193	CAP SCR G2 HH 5/16-18X1.25 ZP		9
88201	CAP SCR G2 HH 3/8-16X1 ZP		6
88217	CAP SCR G2 HH 1/2-13X.75 ZP		3
88224	CAP SCR G2 HH 1/2-13X2.25 ZP		6
88249	NUT HEX G2 FULL 1/4-20 ZP		93
88251	NUT HEX G2 FULL 5/16-18 ZP		177
88252	NUT HEX G2 FULL 3/8-16 ZP		24
88254	NUT HEX G2 FULL 1/2-13 ZP		12
88263	NUT HEX STD JAM 7/16-20 ZP		3

CARTER DAY INTERNATIONAL
DATE 1/09/95

SINGLE LEVEL BILL WITH BLOW-THRU

PARENT ITEM NO.
49622

DESCRIPTION STYCZJ2 UNIFLOW #3 CH DR 3HI
ENGR DRAW

COMPONENT ITEM NO.	DESCRIPTION	ENGINEERING DRAWING NUMBER	QUANTITY PER
88264	NUT HEX STD JAM 1/2-13 ZP		6.
88297	SET-SCR SOC #10-24X.375	NYLOC/EQV	6.
88299	SET-SCR SOC 1/4-20X.25	NYLOC/EQV	9.
88305	SET-SCR SOC 5/16-18X.5	NYLOC/EQV	6.
88306	SET-SCR SOC 5/16-18X.375	NYLOC/EQV	12.
88311	SET-SCR SOC 3/8-16X.5	NYLOC/EQV	3.
88328	SET-SCR SOC 3/8-16X.375	NYL P-KNURL C	3.
88330	SET-SCR SQH 3/8-16X.625	CUP POINT	6.
88331	SET-SCR SQH 3/8-16X.625	NYLOCK	6.
88360	WASHER STL FLAT 5/16 ZP		18.
88362	WASHER STL FLAT 1/2 ZP		6.
88366	WASHER SPRG LOCK 1/4 MED ZP		18.
88372	WASHER SPRG LOCK 1/2 MED ZP		12.
88380	KEY 608 STD WOODRUFF #13		3.
88398	MACH-SCR STL RH #8-32X.375 ZP		24.
88409	MACH-SCR STL RH 1/4-20X.375 ZP		84.
88473	WASHER SPRG LOCK 5/16 MED ZP		21.
88546	NUT HEX G2 FULL 5/16-18 ZP	NYL INS	9.
88646	WASHER SPRG LOCK 3/8 MED ZP		32.
88967	SHLDR-SCR SOC 5/8 X1.25		3.
89103	SCR DRIVE RH #4 X.187 TYP U		12.
90890	LINK CONN RC #50		6.
91009	CAP SCR G2 HH 1/4-20X2.25 ZP		9.
91133	PIN COTTER 3/32X1 ZP		6.
92086	PAINT C-D MET BLUE CER IC5057	CERAMIC IND CT	4.
98673	MANUAL INSTR		1.

CARTER DAY INTERNATIONAL
DATE 1/09/95

SINGLE LEVEL BILL WITH BLOW-THRU

PARENT ITEM NO.
48183

DESCRIPTION FLOW 2A PARALLEL LC
ENGR DRAW

COMPONENT

ITEM NO. DESCRIPTION

ENGINEERING QUANTITY
DRAWING NUMBER PER

31947 SPOUT ADPTR TAILING DISCH
33515 SPOUT ADPTR TAILING DISCH
60527 SPOUT ADPTR LIFTING DISCH

CD-B510 REV0 1.
CD-B997 1.
SC-3054 CD-16 2.

CARTER DAY INTERNATIONAL
DATE 1/09/95

SINGLE LEVEL BILL WITH BLOW-THRU

PARENT ITEM NO.
48184

DESCRIPTION FLOW 2B SERIES LFTNGS LC
ENGR DRAW

COMPONENT
ITEM NO.

DESCRIPTION

ENGINEERING QUANTITY
DRAWING NUMBER PER

31947

SPOUT ADPTR TAILING DISCH

CD-B510 REVO

2.

48604

SPOUT LIFTING DISCH TO REC

CD-C3407 REVO

1.

60527

SPOUT ADPTR LIFTING DISCH

SC-3054 CD-16

1.

CARTER DAY INTERNATIONAL
DATE 1/09/95

SINGLE LEVEL BILL WITH BLOW-THRU

PARENT ITEM NO.
48186

DESCRIPTION FLOW 3A PARALLEL LC
ENGR DRAW

COMPONENT
ITEM NO.

DESCRIPTION

ENGINEERING
DRAWING NUMBER

QUANTITY
PER

31947
33515
60527

SPOUT ADPTR TAILING DISCH
SPOUT ADPTR TAILING DISCH
SPOUT ADPTR LIFTING DISCH

CD-B510 REV0
CD-B997
SC-3054 CD-16

1.
2.
3.

CARTER DAY INTERNATIONAL
DATE 3/27/95

SINGLE LEVEL BILL WITH BLOW-THRU

PARENT ITEM NO.
48609

DESCRIPTION FLOW 3E 2 TOP TLNGS TO BOTTOM
ENGR DRAW LC

COMPONENT ITEM NO.	DESCRIPTION	ENGINEERING DRAWING NUMBER	QUANTITY PER
31947	SPOUT ADPTR TAILING DISCH	CD-B510 REV0	1.0
33515	SPOUT ADPTR TAILING DISCH	CD-B997	1.0
37917	CPLG TBG/PIPE MORRIS 4/3.5-2C	BLK NEO GSMT	1.0
48605	SPOUT CONN TAILING DISCH #3LC	CD-C3408 REV0	1.0
48606	SPOUT TAILING DISCH TO RECV	CD-C3409 REV0	1.0
60527	SPOUT ADPTR LIFTING DISCH	SC-3054 CD-16	3.0

CARTER DAY INTERNATIONAL
DATE 1/09/95

SINGLE LEVEL BILL WITH BLOW-THRU

PARENT ITEM NO. 48593 DESCRIPTION FLOW 3F TLNGS/CTR LFTNGS/BTTM ENGR DRAW LC

COMPONENT ITEM NO.	DESCRIPTION	ENGINEERING DRAWING NUMBER	QUANTITY PER
31947	SPOUT ADPTR TAILING DISCH	CD-B510 REV0	1.
33515	SPOUT ADPTR TAILING DISCH	CD-B997	1.
48592	SPOUT LIFTING DISCH TO REC LC	CD-C3406 REV	1.
48597	SPOUT TAILING DISCH TO REC LC	CD-B3948 REV-	1.
60527	SPOUT ADPTR LIFTING DISCH	SC-3054 CD-16	2.

CARTER DAY INTERNATIONAL
DATE 1/09/95

SINGLE LEVEL BILL WITH BLOW-THRU

PARENT ITEM NO. 47748 DESCRIPTION KIT MOTOR CONTROL 56 FR STD ENGR DRAW #3UF LC

COMPONENT ITEM NO.	DESCRIPTION	ENGINEERING DRAWING NUMBER	REVISION	QUANTITY PER
20086	KNOB ADJUSTING	HC-26136	REV0	1.
20575	WASHER 2.5 X .531 X .125	HC-26237	REV0	1.
413420	LABEL CYL SPEED CONTROL	CD-A3028	REV0	1.
60543	STUD FEED CONTROL 1/2-13 X8.75	SC-2078	REV0	1.
88264	NUT HEX STD JAM 1/2-13 ZP			2.

CARTER DAY INTERNATIONAL
DATE 1/09/95

SINGLE LEVEL BILL WITH BLOW-THRU

PARENT ITEM NO.
47747

DESCRIPTION KIT MOTOR CONTROL 56 FR REMOTE
ENGR DRAW #3UF LC CDC3225

COMPONENT ITEM NO.	DESCRIPTION	ENGINEERING DRAWING NUMBER	REVISION	QUANTITY PER
01478	BRG 5/8 SHAFT	CM-20097	REV	2.
20158	BRACKET ADJ SPEED CONTROL	HC-26155	REVO	1.
20260	KNOB CONTROL	26176		1.
31103	STUD SPEED CONTROL 5/8D	CD-A274	REVO	1.
31104	ROD SPEED CONTROL 5/8D	CD-A275		1.
31116	SET COLLAR STL .625ID 1-SSCR			1.
31140	BRACKET SPEED CONTROL	CD-A284	REVO	1.
36106	WASHER 1-1/8 OD 41/64IN	CD-A1377	REVO	2.
36107	GEAR MITER 12P 20PA 21T .62B	36107A	REV	2.
411541	GUARD DUST UF DRIVE ADJ	CD-B4228	REV	1.
48035	WASHER FLAT .63X1X.075 #36-03	PPD		2.
88190	CAP SCR G2 HH 5/16-18X.75 ZP			2.
88251	NUT HEX G2 FULL 5/16-18 ZP			8.
88299	SET-SCR SOC 1/4-20X.25	NYLOC/EQV		1.
88310	SET-SCR SOC 3/8-16X.375 ZP	NYLOC/EQV CUP		1.
88422	MACH-SCR STL RH 5/16-18X.625ZP			4.
88473	WASHER SPRG LOCK 5/16 MED ZP			4.